

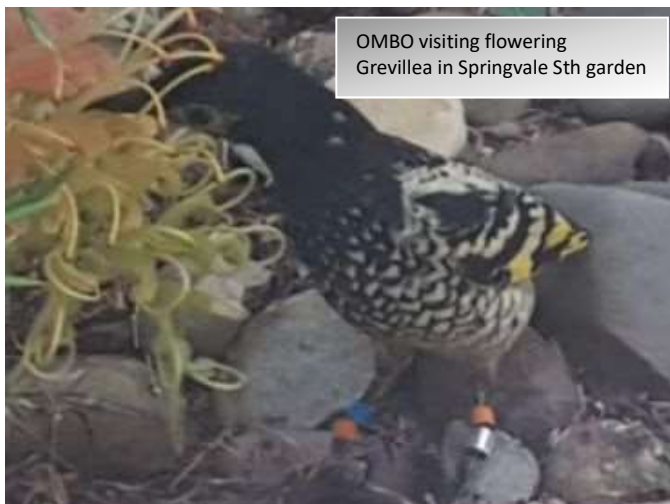
# Regent Honeyeater Captive Release & Community Monitoring Project – Update #31

Hi everyone (Regent Honeyeater email group),  
**Update #31 – 2yrs + post 2017 release**

## Gippsland wanders expand their horizons

You might recall (Updates #24-26 incl.) two of our 2017 released Regents were regularly observed in Stratford then Maffra in Central Gippsland throughout the first half of 2018.

In remarkable news the road tripping 'Thelma & Louise' females have been recently recorded in opposing distant locations. Blue Yellow / Orange Metal (BYOM) was positively identified in Cann River East Gippsland in February 2019 and more recently (March to May 2019) Orange Metal / Blue Orange (OMBO) has been recorded in Melbourne.



OMBO & BWOM have now traversed over 370 & 410 (straight line) kms respectively since their Chiltern release and spent potentially over a year in Gippsland in the process. Please turn over to view a Google Earth movement map.

## Seasonal flowering prospects

.... aren't particularly great in Chiltern with Mugga Ironbark now set for an unprecedented 2<sup>nd</sup> consecutive year of below average flowering. Like most of SE Aust., we experienced extended, extreme heat events over the summer – particularly in January. As a result, early Ironbark budding that had commenced following decent mid Dec. rain has largely aborted.

## Mistletoe to the rescue

Chris Tzaros's fantastic photos (see over for a second pic) demonstrate that mistletoe flowering has provided an unbelievably valuable (often the only) nectar (& insect) resource to a host of nectivorous species over the dry summer and early Autumn.



## National Regent Honeyeater & Swift Parrot Survey

Everyone is invited to help survey **Chiltern Mt Pilot NP** for returning Regents **Saturday 18<sup>th</sup> May**. Our usual sumptuous bush lunch and billy tea will be provided. Pls **RSVP Glen J** (see contact details below) before 16<sup>th</sup> May so we can cater accordingly & provide you with meeting point, time & other details.

## Time to Spot a Regent!

We'd really appreciate everyone keeping an eye and ear for Regents in their patch.

Please let us know ASAP if you spot any or hear of Regent observations. Remember to check for bands with binoculars and take / forward photos where possible.

## Please contact us if you have any queries:

<b>Glen Johnson</b>	DELWP	0418 501 936
<b>Dean Ingwersen</b>	BirdLife Australia	0409 348 553

PTO for more information



MONASH University



Office of  
Environment  
& Heritage



NORTH EAST  
CATCHMENT  
MANAGEMENT  
AUTHORITY



National  
Landcare  
Program



**TARONGA**  
CONSERVATION SOCIETY AUSTRALIA™



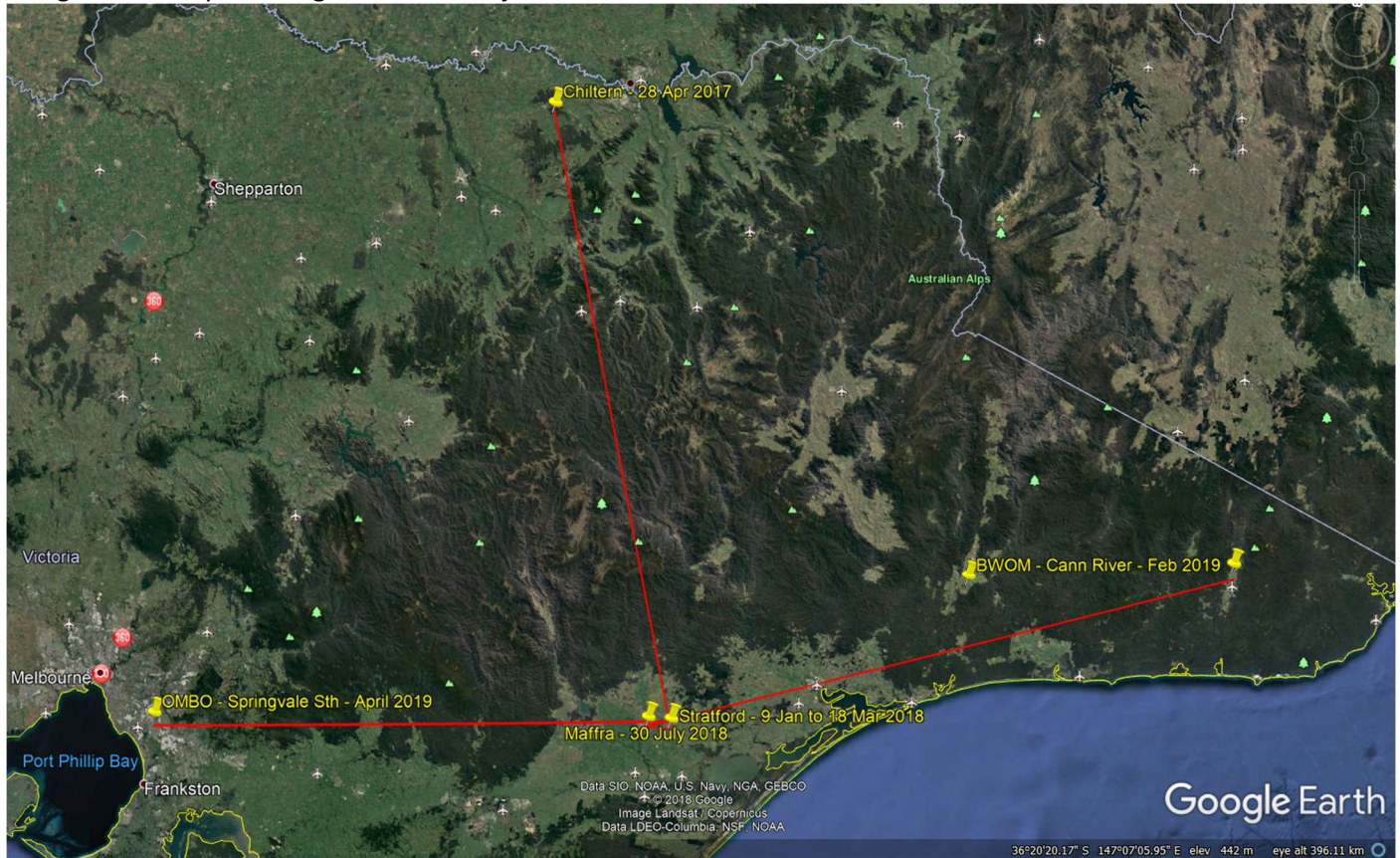
Department of  
Environment, Land,  
Water & Planning





# Regent Honeyeater Captive Release & Community Monitoring Project – Update #31

Google Earth map showing the known major movements of “Thelma & Louise’ OMBO & BWOM.



MONASH University



Office of  
Environment  
& Heritage



NORTH EAST  
CATCHMENT  
MANAGEMENT  
AUTHORITY



National  
Landcare  
Program



**TARONGA**  
CONSERVATION SOCIETY AUSTRALIA™

**birdlife**  
AUSTRALIA

Department of  
Environment, Land,  
Water & Planning

State  
Government  
**Victoria**