

Wildflowers
of the Foothills and Mountains of Northeastern Victoria

This brochure shows a selection of wildflowers from the foothills and mountains in the Goulburn-Broken and Northeast catchments (see map at back). The photos may assist in identifying some of the more common groundlayer species. The bioregion colour codes and the distribution map will help you with your identification. Bioregion descriptions can be found at the Department of Energy, Environment and Climate Action (DEECA) website listed below. The symbol ~ indicates that no other species in that genus are likely to be encountered. Photos show plants in flower, however some colours may vary depending on location.

This brochure provides a good starting point, but many species can look very similar. See the references below for accurate species identification.

Also refer to the guide for the Wildflowers of the Plains and Low Hills in Northeastern Victoria – some of those species are also found here. Aquatic, alpine and annual plants are generally excluded from this guide.

HOW CAN I HELP?

To help to conserve places where wildflowers persist, you can:

- Join a local Field Naturalists, Environment, Friends of, or Landcare group.
- Ask your Shire to include any wildflower areas you know of in their roadside conservation plan.

If you own or manage land:

- Avoid any kind of earthworks in areas with wildflowers and native grasses.
- Avoid the application of herbicides and fertilizers.
- Talk to DEECA Natural Environment Program Officers about ecological burns and kangaroo grazing management.
- Talk to Catchment Management Authority (CMA) officers about fencing and grazing management.
- Control rabbits.
- Identify and remove perennial weeds.
- Talk to Trust for Nature Victoria about Conservation Covenants.

For more information:

Goulburn-Broken Catchment Management Authority

Shepparton (03) 5820 1100 gbcma.vic.gov.au

North East Catchment Management Authority

1300 216 513 necma.vic.gov.au

Department of Energy, Environment and Climate Action (DEECA)

Benalla: (03) 8622 7601 Wodonga: (02) 6071 6201 deeca.vic.gov.au

OTHER REFERENCES

Corrick, M. & Fuhrer, B. 2001. *Wildflowers of Victoria*

Costermans, L., 1992. *Native Trees and Shrubs of South-eastern Australia*

Cunningham, G., Mulham, W., Milthorpe, P. & Leigh, J. 1981.

Plants of Western New South Wales

Lunt, I., Barlow, T. & Ross, J. 1998. *Plains Wandering*

Viridans. 2007. *Wild Plants of Victoria* (CD)

Walsh, N.G. & Entwistle, T.J. 1999. *Flora of Victoria*

ACKNOWLEDGMENTS:

Thanks to those who provided comments on this guide.

Map produced by Phi-R Pty Ltd

Compiled by Mary Titcumb for Department of Energy, Environment and Climate Action, and **Sally Mann**.

Published by GBCMA © Copyright of content owned by GBCMA, 2009.

Citation: Titcumb, M. (DEECA) & Mann, S. (2009) *Wildflowers of the Foothills and Mountains of Northeastern Victoria*, Goulburn Broken Catchment Management Authority, Shepparton.

Cover Photo by Glen Johnson

© The State of Victoria Department of Energy, Environment and Climate Action. This work is licensed under a Creative Commons Attribution 4.0 International licence. You are free to re-use the work under that licence, on the condition that you credit the State of Victoria as author. The licence does not apply to any images, photographs or branding, including the Victorian Coat of Arms, the Victorian Government logo and the Department of Energy, Environment and Climate Action (DEECA) logo. To view a copy of this licence, visit creativecommons.org/licenses/by/4.0/

Disclaimer: This publication may be of assistance to you but the State of Victoria and its employees do not guarantee that the publication is without flaw of any kind or is wholly appropriate for your particular purposes and therefore disclaims all liability for any error, loss or other consequence which may arise from you relying on any information in this publication.

ISBN 978-1-920742-18-8

© Design - Colourfield Design colourfield.com.au 2023

Wildflowers of the Foothills and Mountains of Northeastern Victoria



Energy, Environment and Climate Action



Wildflowers
of the Foothills and Mountains
of Northeastern Victoria



Common Bird-orchid
Chiloglottis valida
■ ■ ■ ■ IH



Golden Moths
Diuris chryseopsis
■ ■ ■ ■ MT



Nodding Greenhood
Pterostylis nutans
■ ■ ■ ■ MT



Red-leg Grass ~
Bothriochloa macra
■ ■ ■ ■ RZ



Long-hair Plume-grass
Dichelachne crinita
■ ■ ■ ■ JH



Weeping Grass ~
Microlaena stipoides
■ ■ ■ ■ MT



Pale Vanilla-lily
Arthropodium milleflorum
■ ■ ■ ■ MT



Chocolate Lily
Arthropodium strictum
■ ■ ■ ■ MT



Small Vanilla-lily
Arthropodium minus
■ ■ ■ ■ MT



Wattle Mat-rush
Lomandra filiformis ssp. coriacea
■ ■ ■ ■ PG



Spiny-headed Mat-rush
Lomandra longifolia ssp. longifolia
■ ■ ■ ■ ■ ■ ■ ■ MT



Many-flowered Mat-rush
Lomandra multiflora ssp. multiflora
■ ■ ■ ■ ■ ■ ■ ■ IH



Rosy Hyacinth-orchid
Dipodium roseum
■ ■ ■ ■ MT



Austral Ladies' Tresses ~
Spiranthes australis
■ ■ ■ ■ ■ ■ ■ ■ EC



Slender Sun-orchid
Thelymitra pauciflora
■ ■ ■ ■ ■ ■ ■ ■ BC



Bristly Wallaby-grass*
Rytidosperma setaceum
■ ■ ■ ■ ■ ■ ■ ■ LR



Common Hedgehog-grass ~
Echinopogon ovatus
■ ■ ■ ■ ■ ■ ■ ■ PG



Milkmaids ~
Burchardia umbellata
■ ■ ■ ■ ■ ■ ■ ■ PM



Bulbine Lily
Bulbine bulbosa
■ ■ ■ ■ ■ ■ ■ ■ MT



Yellow Rush-lily ~
Tricoryne elatior
■ ■ ■ ■ ■ ■ ■ ■ MT



Common Woodrush
Luzula meridionalis
■ ■ ■ ■ ■ ■ ■ ■ IH



Common Bog-sedge#
Schoenus apogon
■ ■ ■ ■ ■ ■ ■ ■ TD



Tassel Sedge
Carex fascicularis
■ ■ ■ ■ ■ ■ ■ ■ PG



Common Maidenhair
Adiantum aethiopicum
■ ■ ■ ■ ■ ■ ■ ■ RZ



Necklace Fern
Asplenium flabellifolium
■ ■ ■ ■ ■ ■ ■ ■ PG



Green Rock-fern
Cheilanthes austrotenuifolia
■ ■ ■ ■ ■ ■ ■ ■ IH



Dense Spear-grass
Austrostipa densiflora
■ ■ ■ ■ ■ ■ ■ ■ IH



Kangaroo Grass ~
Themeda triandra
■ ■ ■ ■ ■ ■ ■ ■ IM



Common Fringe-lily
Thysanotus tuberosus
■ ■ ■ ■ ■ ■ ■ ■ MT



Twining Fringe-lily
Thysanotus patersonii
■ ■ ■ ■ ■ ■ ■ ■ RZ



Common Early Nancy ~
Wurmbea dioica ssp. dioica
■ ■ ■ ■ ■ ■ ■ ■ MT



Variable Sword-sedge
Lepidosperma laterale
■ ■ ■ ■ ■ ■ ■ ■ LR



Leafy Flat-sedge
Cyperus lucidus
■ ■ ■ ■ ■ ■ ■ ■ MR-K



Pale Rush
Juncus pallidus
■ ■ ■ ■ ■ ■ ■ ■ TD



Fishbone Water-fern
Blechnum nudum
■ ■ ■ ■ ■ ■ ■ ■ MT



Mother Shield-fern
Polystichum proliferum
■ ■ ■ ■ ■ ■ ■ ■ IM



Austral Bracken ~
Pteridium esculentum
■ ■ ■ ■ ■ ■ ■ ■ MT



Common Tussock-grass
Poa labillardierei
■ ■ ■ ■ ■ ■ ■ ■ MT



Red-anthered Wallaby-grass ~
Rytidosperma pallidum
■ ■ ■ ■ ■ ■ ■ ■ MT



Black-anther Flax-lily
Dianella revoluta var. revoluta
■ ■ ■ ■ ■ ■ ■ ■ MT



Tasman Flax-lily
Dianella tasmanica
■ ■ ■ ■ ■ ■ ■ ■ IM



Nodding Blue-lily ~
Stypandra glauca
■ ■ ■ ■ ■ ■ ■ ■ MT



Tall Sedge^
Carex appressa
■ ■ ■ ■ ■ ■ ■ ■ MT



Thatch Saw-sedge
Gahnia radula
■ ■ ■ ■ ■ ■ ■ ■ MR-K



Red-fruit Saw-sedge
Gahnia sieberiana
■ ■ ■ ■ ■ ■ ■ ■ PG

Herbs

Herbs

Herbs

Sub-Shrubs & Twiners

Bioregions of the Foothills and Mountains, Northeastern Victoria



Variable Plantain
Plantago varia
PG



Small Poranthera ~
Poranthera microphylla
IM



Small St John's Wort
Hypericum gramineum
MT



Southern Tick-trefoil
Desmodium gunnii
PG



Kidney-weed ~
Dichondra repens
MT



Prickly Woodruff
Asperula scoparia
IM



Many-stemmed Bluebell
Wahlenbergia multicaulis
KW



Tall Bluebell
Wahlenbergia stricta
PM



Rock Isotome
Isotoma axillaris
CF



Honey-pots
Acrotriche serrulata
MT



Creeping Bossiaea
Bossiaea prostrata
IM



Blue Finger-flower ~
Cheiranthra linearis
MT



Blue Pincushion ~
Brunonia australis
MT



Austral Bear's-ear ~
Cymbonotus preissianus
MT



Common Bottle-daisy
Lagenophora stipitata
IH



Shady Wood-sorrel
Oxalis exilis
PC



Showy Violet
Viola betonicifolia
MT



Ivy-leaf Violet
Viola hederacea
MT



Slender Dock
Rumex brownii
IH



Common Raspwort
Gonocarpus tetragynus
MT



Hill Raspwort
Gonocarpus elatus
TD



Common Hovea
Hovea heterophylla
MT



Dwarf Boronia
Cyanothamnus nanus var. hyssopifolius
MT



Common Rice-flower
Pimelea humilis
MT



Variable Billy-buttons
Craspedia variabilis
CF



Button Everlasting
Coronidium scorpioides
TD



Scaly Buttons
Leptorhynchus squamatus
MT



Stinking Pennywort
Hydrocotyle laxiflora
RZ



Hairy Speedwell
Veronica calycina
PG



Austral Bugle ~
Ajuga australis
MT



Variable Willow-herb
Epilobium billardierianum ssp. cinereum
IM



Tall Sundew
Drosera auriculata
MT



Grass Triggerplant
Stylidium armeria
EC



Running Postman ~
Kennedia prostrata
CF



Love Creeper ~
Comesperma volubile
MR-K



Common Apple-berry
Billardiera mutabilis
IM



Clustered Everlasting
Chryscephalum semipapposum
MT



Australian Buttercup
Ranunculus lappaceus
MT



Creamy Candles
Stackhousia monogyna
MT



Variable Crane's-bill
Geranium sp. 2
MT



Bidgee-widgee
Acaena novae-zelandiae
IM



Prickly Starwort
Stellaria pungens
IH



White Elderberry ~
Sambucus gaudichaudiana
MR-K



Rough Fireweed
Senecio hispidulus
MT



Scrub Nettle
Urtica incisa
TD



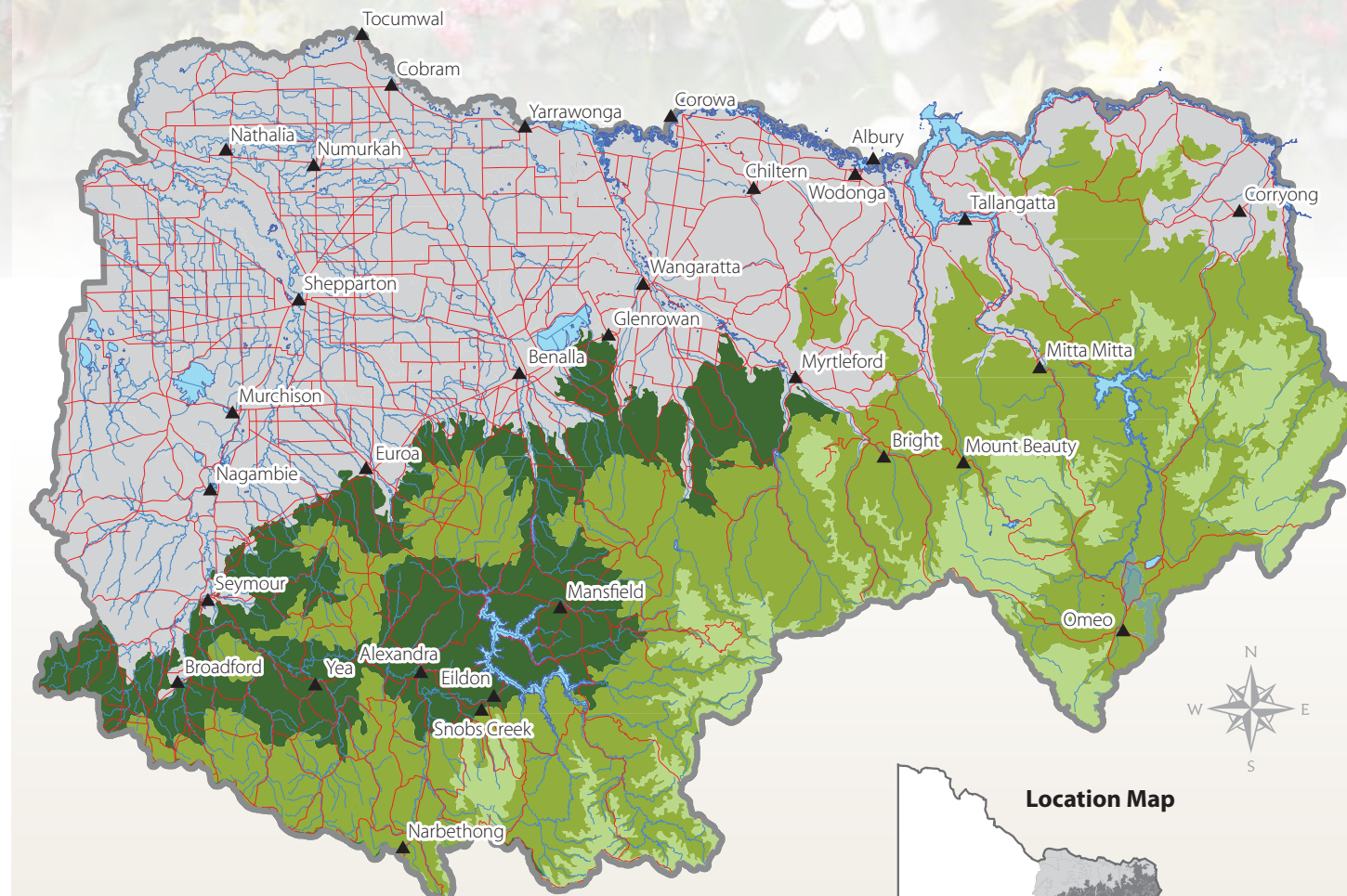
Twining Glycine
Glycine clandestina
MT



Purple Coral-pea ~
Hardenbergia violacea
MT



Mountain Clematis
Clematis aristata
IM



SPECIES STATUS

Listed under the Victoria Flora and Fauna Guarantee (FFG) Act 1988

* Member of FFG listed community

'Grey Box-Buloke Grassy Woodland Community'

Member of FFG listed community

'Granite Foothills Spring Wetland (North-east Victoria) Community'

^ Member of the FFG listed community

'Cool Temperate Mixed Forest Community'

WEBSITES

CSU Herbarium csu.edu.au/herbarium

PlanetNET planetnet.rbg.vic.gov.au/

Greening Australia greeningaustralia.org.au

Landcare Gateway landcarevic.org.au

Land for Wildlife Search: Land for Wildlife Victoria

National Herbarium of Victoria vicflora.rbg.vic.gov.au/

State Wide Integrated Flora and Fauna Teams (SWIFFT) swift.net.au

PHOTOGRAPHY:

All photographs shown here (apart from Paul Gullan/Viridans Images) have been donated. The initials of the photographer/organisation is listed below each image. *BC* Brad Costin, *CF* Chris Findlay, *CSU* Charles Sturt University Herbarium, *EC* Eileen Collins, *IH* Ian Higgins, *IM* Ian McCann courtesy of The State of Victoria, Department of Environment, Land Water and Planning collection, *JH* Jo Heard, *KW* Karen Wales, *LR* Lyndall Rowley, *MR-K* Mike Robinson-Koss, *MT* Mary Titcomb, *PC* Dr Peter Curtis, *PG* Paul Gullan/Viridans Images, *PM* Paul McKenna, *RZ* Reto Zollinger, *TD* Tim D'Ombrian.

Legend

- Central Victorian Uplands
- Highlands - Northern Fall
- Victorian Alps
- East Gippsland Uplands
- Streambanks and Wetlands
- See "Wildflowers of the Plains and Low Hills of Northeastern Victoria"