

Pollinator Insects of the South West slopes of NSW and North East Victoria

This guide has been prepared to aid identification of a selection of common pollinator insects.

This guide provides a good starting point, but many species can look similar. Please see the references and websites listed if you would like help with accurate species identification.



Golden-browed resin bee *Megachilidae*

Online pollinator information resources

Wild Pollinator Count wildpollinatorcount.com
Join wild pollinator count events each spring and autumn at your place. Access additional resources and information about pollinator insects.

Atlas of Living Australia ala.org.au

iNaturalist inaturalist.ala.org.au

Australian Museum Plant2pollinator
australian.museum/learn/teachers/learning/bugwise/welcome-to-plant2pollinator

PaDIL Australian Pollinators padil.gov.au/pollinators

Museums Victoria insect resources collections.museumsvictoria.com.au
museumsvictoria.com.au/apps/field-guide-app-to-victorian-fauna

Photography

All photographs have been donated by Manu Saunders, Karen Retra, James Abell
Cover photograph: Australian painted lady, *Vanessa kershawi*

Acknowledgements

Compiled and written by Manu Saunders and Karen Retra. First edition produced with support from the Slopes to Summit Partnership and the NSW Environmental Trust. This edition supported by the Department of Energy, Environment and Climate Action (DEECA) with funding from the Victorian Government.

© The State of Victoria Department of Energy, Environment and Climate Action. This work is licensed under a Creative Commons Attribution 4.0 International licence. You are free to re-use the work under that licence, on the condition that you credit the State of Victoria as author. The licence does not apply to any images, photographs or branding, including the Victorian Coat of Arms, the Victorian Government logo and the Department of Energy, Environment and Climate Action (DEECA) logo. To view a copy of this licence, visit creativecommons.org/licenses/by/4.0/. Disclaimer: This publication may be of assistance to you but the State of Victoria and its employees do not guarantee that the publication is without flaw of any kind or is wholly appropriate for your particular purposes and therefore disclaims all liability for any error, loss or other consequence which may arise from you relying on any information in this publication. ISBN 978-1-76105-237-8. © Design – Colourfield Design colourfield.com.au 2023

Pollinator Insects of the South West slopes of NSW and North East Victoria



Pollinator Insects of the South West slopes of NSW and North East Victoria

An identification and conservation guide



Hymenoptera: Bees



Blue-banded bee
Apidae



Chequered cuckoo bee
Apidae



Common spring bee
Colletidae



European honey bee
Apidae



Golden-browed resin bee
Megachilidae



Halictid bee (*Lipotriches* sp.)
Halictidae

Hymenoptera: Bees



Halictid bee
Halictidae



Hylaeus bee
Colletidae



Hylaeus bee (bubbling)
Colletidae



Large *Lasioglossum* sp.
Halictidae



Leafcutter bee
Megachilidae



Red *Lasioglossum* bee
Halictidae

Hymenoptera: Bees

- Around 2,000 native bee species currently known.
- Mostly found in sunny, open woodlands, gardens and meadows with lots of flowers.
- Active when it is warm, fine and calm or only lightly breezy.
- Nest in bare sandy soil, or cavities of dead wood or stone walls.
- Size range: 5 mm to over 2 cm; colours: black, gold, red, yellow or green, often with stripes on abdomen.

Hymenoptera: Wasps, Ants & Sawflies



Ant
Formicidae



Cuckoo wasp
Chrysididae



Flower wasp (female, wingless)
Tiphidae



Cream-spotted ichneumon wasp
Ichneumonidae



European wasp
Vespidae



Flower wasp (male)
Tiphidae

Hymenoptera: Wasps, Ants & Sawflies



Gasteruptionid wasp
Gasteruptionidae



Orange ichneumon wasp
Ichneumonidae



Paper wasp
Vespidae



Hairy flower wasp
Scoliidae



Paper wasp
Vespidae



Sawfly adult
Tenthredinidae

Hymenoptera: Wasps, Ants & Sawflies

- Around 8,000 native species currently known; many more undescribed.
- Found in all habitats. Wasps lay eggs in leaf litter, cavities, bare soil or other insects; ants build nests underground or in trees; sawflies lay eggs under leaves.
- Size range: 0.1 mm to over 10 cm; colours: black, red, orange, brown, gold.
- Wasps are also predators and parasitoids of other insects; sawfly larvae (some species called 'spitfires') can be pests of eucalypts when abundant; ants are predators of other insects and some species contribute to soil health.

Diptera: Flies

Diptera: Flies

Lepidoptera: Butterflies & Moths

Lepidoptera: Butterflies & Moths

Pollinators

Coleoptera: Beetles



Bee fly (hairy)
Bombyliidae



Bee fly
Bombyliidae



Blow fly
Calliphoridae



Blow fly
Calliphoridae



Drone fly
Syrphidae



Flesh fly
Sarcophagidae



Hover fly (Ischiodon sp.)
Syrphidae



Hover fly (Melangyna sp.)
Syrphidae



Lauxaniid fly
Lauxaniidae



March fly
Tabanidae



Rhiniid fly
Rhiniidae



Soldier fly
Stratiomyidae

Diptera: Flies

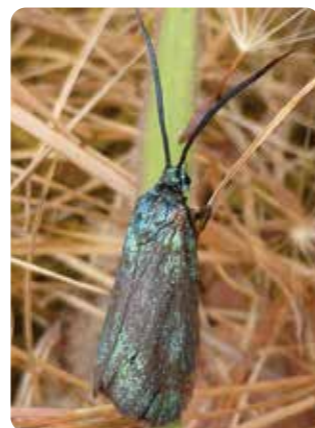
- About 7,000 native species currently known; many more undescribed.
- Found in all types of habitat; lay eggs in leaf litter, cavities, bare soil, other insects, or rotting organic matter.
- Active through winter and at lower temperatures, compared to native bees.
- Size range: 1 mm to over 3 cm; colours: black, yellow, orange, green, grey, brown. Usually distinguished from bees and wasps by lack of waist and large bulbous eyes.
- Most species are predators or parasitoids of other insects.



Australian painted lady
Nymphalidae



Bogong moth
Noctuidae



Burnet
Zygaenidae



Cabbage white
Pieridae



Common grass blue
Lycaenidae



Common grass blue
Lycaenidae



Double-spotted line blue
Lycaenidae



Hawk moth
Sphingidae



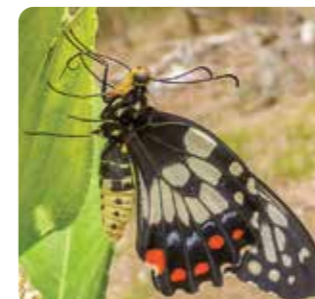
Heliotrope moth
Arctiidae



Red-spotted Jezebel
Pieridae



Skipper
Hesperiidae



Swallowtail
Papilionidae

Lepidoptera: Butterflies & Moths

- About 10,000 native species currently known; more undescribed.
- Found in all types of habitat; lay eggs in leaf litter or on plants.
- Pupa stages found hanging from tree stems (butterfly chrysalis) or spun around branches or leaves (moth cocoon).
- Butterflies mostly active in day, moths generally active at night; but many day-flying moths too!
- Most larvae feed on plants (foliage or wood), a few feed on other insects; can be pests when present in high numbers.
- Size range: wingspan 3 mm to over 20 cm.

Why do pollinators matter?

- Many flowering plants (food crops and native plants) rely on insect pollinators to set fruit.
- In Australia, there are many specialised native plant-pollinator relationships, so pollinator conservation is not just about focusing on the most common species.
- While honey bees are perhaps the most recognised pollinators, they are an introduced species. However, there are thousands of Australian native pollinators too.
- Many of these insects play other important roles in the ecosystem in addition to pollination, such as biological control or waste decomposition, and are important contributors to biodiversity generally.



Many native plants have co-evolved with native pollinators

How can I help?

- Make sure your property supports a diversity of flowering plants and that flowers are available for most of the year.
- Pollinators need non-floral resources too, e.g. tree resins, nest sites, water.
- Provide pollinator nest sites: bee hotels, dead wood or plant stems, small areas of bare sandy ground and leaf litter patches.
- Reduce your use of chemical sprays. Many pesticides will kill pollinators as well as pests; overuse of herbicides can remove many of the flowering herbs that pollinators rely on throughout the year.
- Record and share your observations to help build knowledge about these species. Citizen science projects including websites and mobile apps allow you to share your sightings with others and may help you with identification, e.g. iNaturalist and the biannual Wild Pollinator Count.

N.B. Not all insects on flowers are true pollinators. Some might be eating pollen on one flower without transferring it to another (which is how pollination happens). You won't always be able to tell, but you can have an educated guess based on the insect and its activity on the plant. Tiny, flightless insects that rarely move between flowers will probably not be great pollinators. If the plant has male and female flowers on separate plants, the insect will need to move between plants to cause pollination. However, in general, most insects you see on flowers can be considered 'potential' pollinators.



Plague soldier beetle
Cantharidae



Jewel beetle
Buprestidae



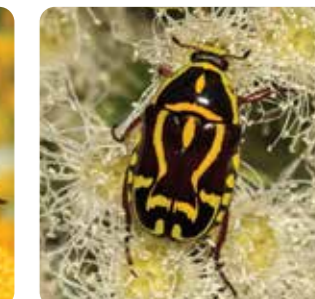
Ladybird
Coccinellidae



Longicorn beetle
Cerambycidae



Pintail
Mordellidae



Fiddler beetle
Scarabaeidae

Coleoptera: Beetles

- Over 20,000 native species currently known; many more undescribed.
- Found in all habitats, terrestrial and freshwater; diverse life histories in 3 main groups: herbivores, predators and scavengers.
- Not all species are pollinators, or even flower visitors! Beetles don't fly far, so most potential pollinator beetles will be found on flowers.
- Size range: 0.4-80 mm; characterised by hard forewings (elytra)