

Investing in a more sustainable future

Victorian Government Sustainability Fund
2015-2017 Activities Report



This report is public and available online at www.delwp.vic.gov.au

© The State of Victoria Department of Environment, Land, Water and Planning 2018

This work is licensed under a Creative Commons Attribution 4.0 International licence. You are free to re-use the work under that licence, on the condition that you credit the State of Victoria as author. The licence does not apply to any images, photographs or branding, including the Victorian Coat of Arms, the Victorian Government logo and the Department of Environment, Land, Water and Planning (DELWP) logo. To view a copy of this licence, visit <http://creativecommons.org/licenses/by/4.0/>

ISBN 978-1-76047-997-8 (pdf/online)

Disclaimer

This publication may be of assistance to you but the State of Victoria and its employees do not guarantee that the publication is without flaw of any kind or is wholly appropriate for your particular purposes and therefore disclaims all liability for any error, loss or other consequence which may arise from you relying on any information in this publication.

Accessibility

If you would like to receive this publication in an alternative format, please telephone the DELWP Customer Service Centre on 136 186, or email customer.service@delwp.vic.gov.au (or relevant address), or via the National Relay Service on 133 677, www.relayservice.com.au. This document is also available on the internet at www.delwp.vic.gov.au

Cover windfarm image © Sustainability Victoria 2017

Contents

Secretary's Foreword	2
Overview	4
What is the Sustainability Fund?	5
The source of the Sustainability Fund	6
Priority Statement	8
Supporting the Priority Statement	10
Supporting different types of organisations	12
Sustainability Fund expenditure over time	14
Case study: Love Food Hate Waste	16
Case study: Victorian Residential Efficiency Scorecard	18
Case study: Biodiversity – Threatened Species	20
Case study: Litter Hotspots	22
Sustainability Fund 1 July 2015 – 30 June 30 2017	24
Programs funded 2015/2016	24
Programs funded 2016/2017	25
Sustainability Fund supported projects 2015/2016	26
Sustainability Fund supported projects 2016/2017	45

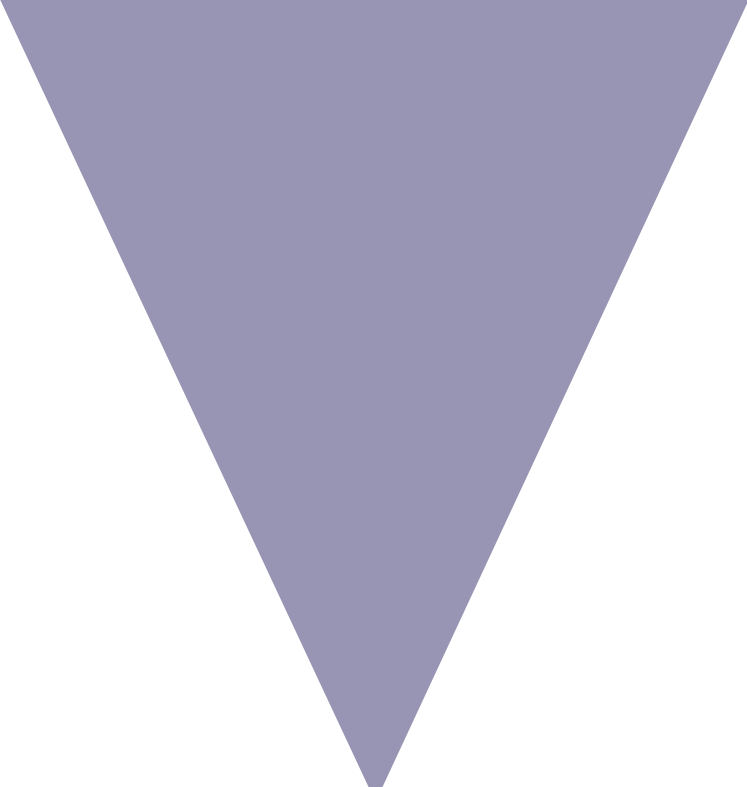
Secretary's Foreword



Our environment underpins the wellbeing and liveability of Victoria. Every time we reduce, reuse, or recycle we are using less resources, generating less waste, reducing greenhouse gases associated with production and from landfill, and lowering our environmental impact.

Victoria's landfill levies provide an important mechanism to reduce the amount of waste to landfill. A portion of the revenue generated from the municipal and industrial landfill levies is used to fund key government environmental agencies. The remainder is transferred to the Sustainability Fund.

The Fund's aims are clear: ensure that Victoria lowers our impact on the environment by reducing impacts from waste, through innovation and the stimulation of viable industries, limiting our greenhouse gas emissions, helping communities and natural environments adapt to climate change, and building a more sustainable future.



This report details the Fund's investments from 1 July 2015 to 30 June 2017. It aims to provide a record of the breadth of work taking place to support waste reduction and climate adaptation and mitigation, and the role the Fund plays in catalysing employment, new technology, innovation and resource efficiency.

The case studies provide tangible examples of how this funding supports a diverse range of on-ground activity. These targeted programs funded from the Sustainability Fund, can reduce the need for new landfills, increase productive uses of resources, and reduce our greenhouse gas emissions, while preparing communities, businesses and industry for the changes in the climate that have already been locked in.

In July 2015, in response to the advice of the 2013 Ministerial Advisory Committee report on Waste and Resource Recovery Governance Reform, the management of the Sustainability Fund was transferred to the Department of Environment, Land, Water and Planning (DELWP).

With community consultation, new strategic priorities for the Fund were established, prioritising initiatives that foster employment, new technology and innovation, resource efficiency or ongoing behaviour change.

These priorities guide the management of the Fund as it significantly expands the investments made back into the community. Funds from the Sustainability Fund must be allocated in accordance with the *Environment Protection Act 1970*, and the Sustainability Fund Priority Statement.

The Government has steadily increased its committed funding through the last three State Budgets. Funding has increased from \$24 million in 2015-16, to \$136 million in the 2016-17 Victorian State Budget.

In the 2017-18 budget an unprecedented \$419 million in new investment from the Sustainability Fund was approved over the forward estimates.

This has resulted in significant investment from the Sustainability Fund into projects that will take decisive action on climate change, support innovation and stimulate viable waste management industries.

This funding will help increase the resource recovery rate for priority materials and reduce the amount of waste going to landfill. It supports a ban on e-waste from landfill, assists councils with collection infrastructure and processes, and results in reduced greenhouse gas emissions.

It will also help Victoria reach its emissions reduction targets for 2020 through to 2050 and lay the foundations for successful adaptation and net zero emissions.



John Bradley
Secretary

Overview

Established by the Victorian Government in 2004, the Sustainability Fund is a remarkable investment in the State's sustainable future.

In its twelve years the Fund has invested in many hundreds of projects that have been initiated by community organisations, local governments, industry, and research institutions. More than \$900 million has been allocated in this endeavour, reaching communities in all parts of Victoria.

The Fund has helped Victorians in many different types of projects. It has helped to green and retrofit buildings, improve sustainable transport and water efficiency, reduce waste going to landfill, and improved resource recovery. It has supported programs that educate and inspire people to change to a more sustainable way of life.

This Activities Report details the activities of the Sustainability Fund from 1 July 2015 to 30 June 2017.

It explains how the Fund is set up and what its focus will be in the coming years. Importantly, it also provides detail on how the funds have been allocated in this two-year period, and each of the programs that have been supported. It showcases several projects with case studies highlighting their achievements.

The *Environment Protection Act 1970* defines waste to include:

- a. any matter whether solid, liquid, gaseous or radio-active which is discharged, emitted or deposited in the environment in such volume, constituency or manner as to cause an alteration in the environment;
- b. any greenhouse gas substance emitted or discharged into the environment;
- c. any discarded, rejected, unwanted, surplus or abandoned matter;
- d. any otherwise discarded, rejected, abandoned, unwanted or surplus matter intended for
 - i. recycling, reprocessing, recovery, or purification by a separate operation from that which produced the matter; or
 - ii. sale;
- e. any matter prescribed to be waste.

What is the Sustainability Fund?

The Sustainability Fund exists to support programs and government initiatives to deliver a range of waste management, recycling, resource efficiency and climate change programs.

The first funding was released in 2005 by Sustainability Victoria, who administered the Fund until July 2015 when management transferred to the Department of Environment, Land, Water and Planning (DELWP).

The purpose of the Sustainability Fund, as defined by Section 70 of the *Environment Protection Act 1970*, is to:

- foster environmentally sustainable uses of resources and best practices in waste management to advance the social and economic development of Victoria;
- foster community action or innovation in relation to the reduction of greenhouse gas substance emissions or adaptation or adjustment to climate change in Victoria.

Funds are allocated with the joint consent of the Minister for Energy, Environment and Climate Change and the Premier, consistent with the Priority Statement. The Municipal and Industrial Landfill Levy (MILL) is the sole source of revenue for the Sustainability Fund.

The Sustainability Fund Committee provides impartial advice to ensure funding allocations offer value for money and align with legislated priorities, as well as overseeing strategic and accountable management of the Fund. The members of the Committee during the period have been:

- Freya Marsden, Chair (2016 - current)
- Joe Groher, Deputy Chair (2016 - current)
- Kath Rowley (2016 - current)
- Mark Feather (2016 - March 2017)
- Paul Murfitt (March 2017 - current)
- Anthony Connelly (2016 - May 2017).

The source of the Sustainability Fund



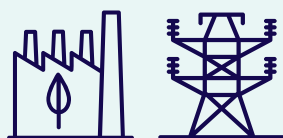
We use the levy to drive **better outcomes** for our environment



More **recycling and recovery** of materials



Less waste to landfill



More waste to **energy markets**



Capacity building councils and communities



Accelerating Victoria's transition to a low carbon future

Each year around **four million tonnes of waste** is deposited in Victoria's landfills.

A levy on waste

The Municipal and Industrial Landfill Levy (MILL) acts as a deterrent to increasing our landfill. Just as a higher price on sugary drinks makes it more likely that people will choose a healthier option*, putting a levy on landfill deposits is an incentive to reuse, recycle, or reduce waste. This helps to prevent it ending up in our local tips. The money collected through the MILL funds the agencies and programs that are working to drive better environmental outcomes for Victoria.

The MILL is paid by licensed landfill operators for each tonne of waste deposited, with the cost passed on to the user through gate fees. The MILL is collected by the Environment Protection Authority (EPA) then transferred to a trust account managed by the Department of Environment, Land, Water and Planning (DELWP), (see Figure 2).

How levy funds are used

The MILL funds the essential work of environmental agencies and initiatives that improve waste management or take action on climate change. In 2017-18 \$123 million from the MILL will be distributed to environmental agencies, such as the EPA and Sustainability Victoria.

The remaining funds are transferred to the Sustainability Fund. Under the *Environment Protection Act 1970*, this Fund is to:

- foster environmentally sustainable uses of resources and best practices in waste management to advance the social and economic development of Victoria;
- foster community action or innovation in relation to the reduction of greenhouse gas substance emissions or adaptation or adjustment to climate change in Victoria.

* www.alfredhealth.org.au/news/reducing-the-appeal-of-sugar-sweetened-drinks/

Figure 1: The Municipal and Industrial Landfill Levy (MILL) acts as a deterrent to increasing our landfill. The funds collected support agencies and programs that are working to drive better environmental outcomes for Victoria.

Municipal and Industrial Landfill Levy

\$86 million was distributed in **2016/2017** to agencies improving waste management or taking action on climate change

\$123 million will be distributed in **2017/2018** to agencies improving waste management or taking action on climate change

2016/2017*

2017/2018

Environment Protection Authority

\$49 million

\$78 million

- Prevention focus
- Industrial waste
- Illegal dumping

Sustainability Victoria

\$20 million

\$19 million

- Education and behaviour change
- State-wide waste planning
- Reuse and recovery
- Energy and materials efficiency

Waste & Resource Recovery Groups

\$9 million

\$10 million

- Work with councils on:
- Waste minimisation and management
 - Resource recovery
 - Collective procurement of waste services and infrastructure
 - Grants

Parks Victoria Commissioner for Environmental Sustainability Committees of Management for Crown Land

\$8 million

\$22 million

Remainder of Levy distributed to Sustainability Fund

This supports resource efficiency or best practice waste management or action on climate change.

2016/2017

\$122 million flowed into Sustainability Fund
\$53 million - distributed from Sustainability Fund

2017/2018

\$80 million expected to flow into Sustainability Fund
\$176 million will be distributed from Sustainability Fund

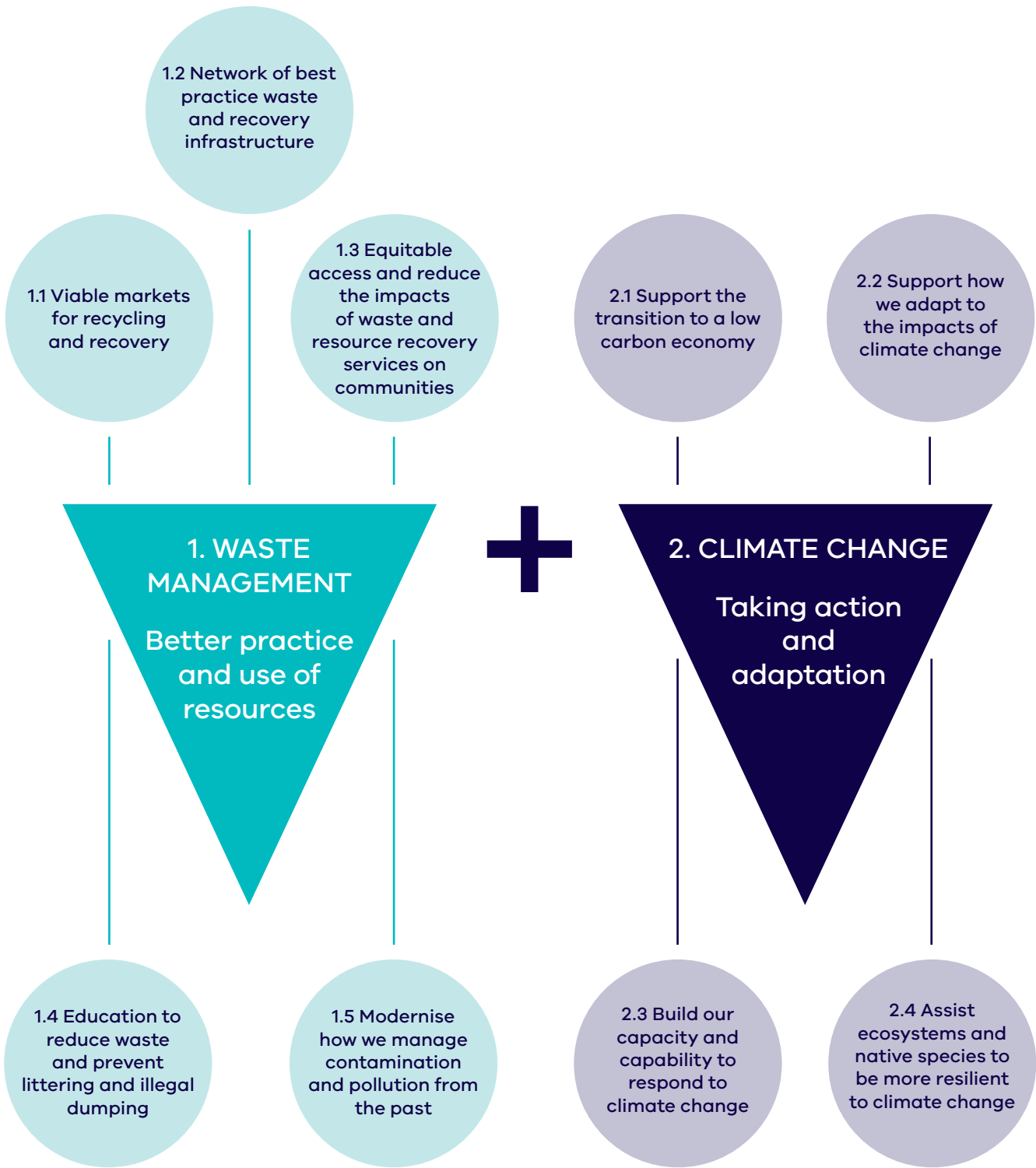
* Data sourced from page 283 of the 2017 DELWP Annual Report

Figure 2: How the Municipal and Industrial Landfill Levy is distributed

Priority Statement

The Priority Statement sets out the priorities of the Victorian Government and guides how funds are invested. The Priority Statement was refreshed in 2015/16 after consulting with the Victorian community, to position Victoria as a leader in resource recovery, waste management and climate change mitigation and adaptation. The statement clarifies how eligible programs will be prioritised to ensure funds are applied in a way that maximises benefits for Victoria.

Sustainability Fund's legislated purpose:	
<p>Fostering environmentally sustainable uses of resources and best practices in waste management to advance the social and economic development of Victoria</p>	<p>Fostering community action or innovation in relation to the reduction of greenhouse gas substance emissions [mitigation] or adaptation or adjustment to climate change in Victoria</p>
<p>Strategic priorities:</p> <ul style="list-style-type: none"> • making alternatives to landfill more viable and cost competitive through the stimulation, creation and expansion of viable markets for recycled and recovered materials; • facilitating a network of best practice waste and resource recovery infrastructure which minimises public health and environmental impacts and maximises resource recovery opportunities; • providing equity in access to, and reducing impacts of, waste and resource recovery services on communities; • improving waste education and waste management capability to reduce waste generation, recover resources, and prevent littering and illegal dumping; and • modernising the management of legacy contamination or pollution. 	<p>Strategic priorities:</p> <ul style="list-style-type: none"> • supporting individuals, communities and industry to transition to a low carbon economy; • supporting Victorians to adapt to the impacts of climate change, particularly those most vulnerable and least able to do so; • building Victorian communities' capacity, capability and skills in responding to climate change; and • assisting Victoria's ecosystems and native species to be more resilient to climate change and/or support mitigation outcomes.
<p>Investment will be guided by Victorian government policies, including the <i>Environment Protection Act 1970</i>, the Statewide Waste and Resource Recovery Infrastructure Plan, Regional Waste and Resource Recovery Implementation Plans and associated regulations and waste management policies.</p>	<p>Investment will be guided by Victorian government policies, including the <i>Climate Change Act 2017</i>, Victoria's Climate Change Framework, the Victorian Climate Change Adaptation Plan 2017-20, Energy Efficiency and Productivity Statement, Renewable Energy Action Plan, Biodiversity 2037 and associated regulations and waste management policies.</p>



Supporting the Priority Statement

The Priority Statement sets out the strategic priorities of the Sustainability Fund within its legislated purpose (refer page 8). The following charts illustrate how the Sustainability Fund investments in 2015/16 and 2016/17 align with the Fund’s strategic priorities.

The first charts show how the Sustainability Fund was allocated against the waste management and climate change action priority themes, noting that some funding addresses all strategic priorities and a small amount is used for the operation of the Fund.

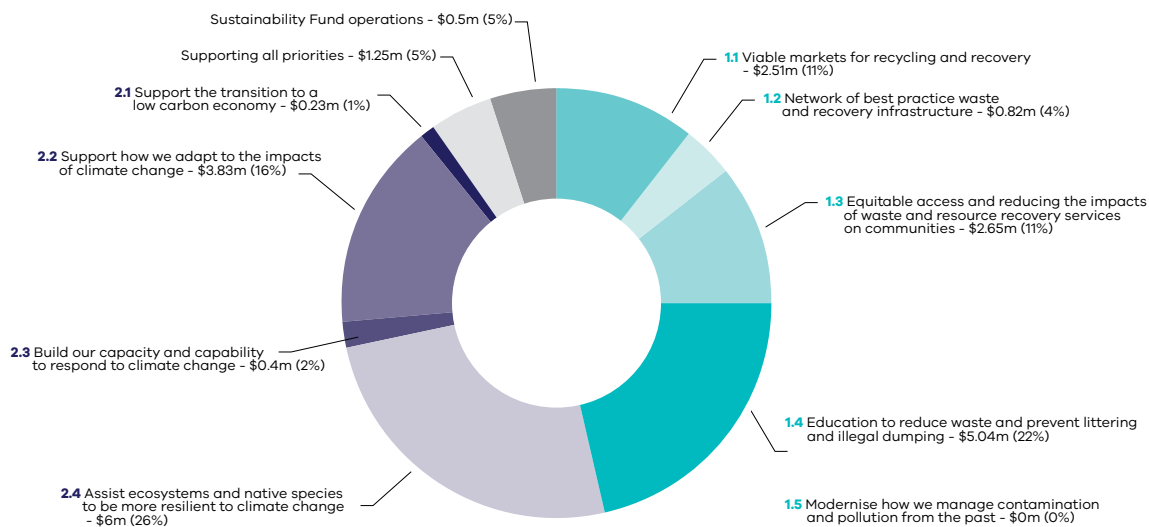
Following the Ministerial Advisory Committee report on Waste and Resource Recovery Governance Reform and the community consultation that established new clear strategic priorities for the Fund, there is a notable increase in funding to act on climate change. By targeting funding, the government can reduce greenhouse gas emissions from waste, while preparing our communities, businesses and industry for the changes in the climate that have already been locked in.

Following the review and refinement of the Priority Statement in 2015/16 considerable funds were allocated to climate change action in the following year.

Sustainability Fund Allocation by priority theme

Fund objectives	2015-16	2016-17
Address both objectives	\$1,250,000	\$550,000
Waste	\$11,020,000	\$19,430,000
Climate change	\$10,460,000	\$38,000,000
Sustainability Fund operations	\$500,000	\$740,000

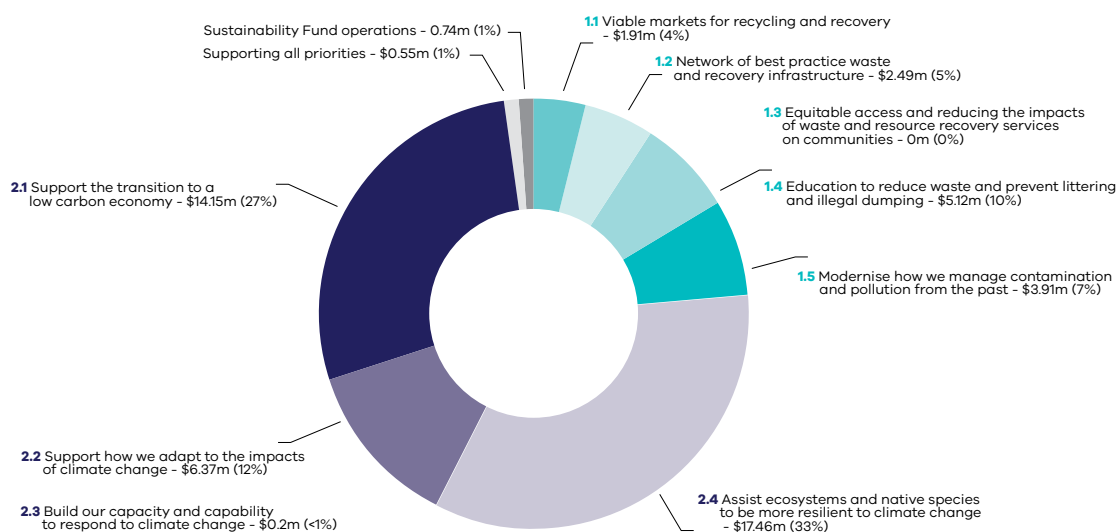
Investment by strategic priority in 2015/16*



* Data sourced from pages 269-270 of the DELWP 2016 Annual Report

Figure 4: Sustainability Fund expenditure in 2015/16 against each area of focus in the Priority Statement.

Investment by strategic priority in 2016/17*



* Data sourced from pages 285-286 of the 2017 DELWP Annual Report

Figure 5: Sustainability Fund expenditure in 2016/17 against each area of focus in the Priority Statement.

Supporting different types of organisations

In the past two years, the Sustainability Fund has assisted 587 organisations to undertake initiatives that deliver better environmental outcomes for Victoria, by providing funding for delivery agencies to run targeted grant programs.

Organisations that receive funding via grants programs, include local councils and community groups, universities and research institutions, charities and corporations, government agencies and volunteer groups. This diversity of organisations supported is one of the great strengths of the Fund, ensuring that it reaches across many Victorian communities.

Figure 6 illustrates how the Fund has supported projects led by different sectors in 2015/16 and 2016/17 and how the mix of organisations supported through the Sustainability Fund varies from year to year.

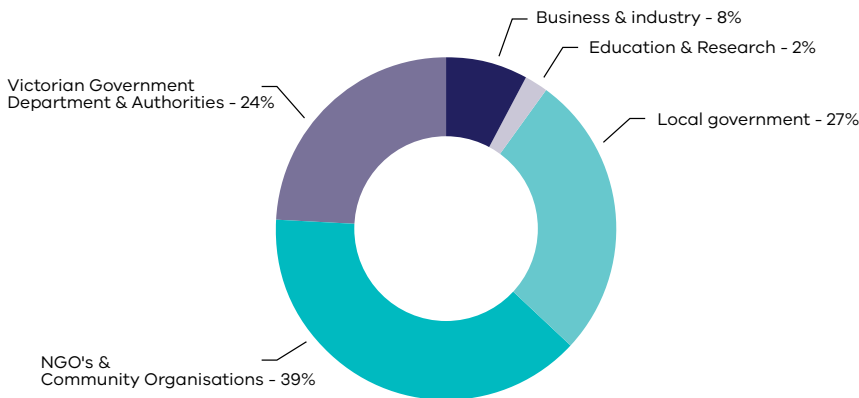
In both years more projects delivered by non-government and community organisations were funded than any other sector. This reflects the significant impact of the community sector through leadership, collaboration and their encouragement of local participation and involvement.

In 2015/16, 27 per cent of projects supported were led by councils, and they comprised ten per cent of the project mix in 2016/17. Local governments tackled the impacts of climate change with projects such as shellfish reefs for shoreline protection of highly erodible coasts (Greater Geelong) and renewable energy feasibility (East Gippsland). Other initiatives included a community facility sustainable audit (Buloke), cooling canopies for community resilience (Towong Shire) and a cigarette butt litter education and enforcement project (South Gippsland). This is in addition to the funding and resources developed and provided each year to local government by Sustainability Victoria and the EPA to reduce waste going to landfill and help local councils improve resource recovery.

Around one quarter of the projects funded in both years were led by Victorian Government departments or agencies. Departments piloted initiatives such as retrofitting public housing to reduce energy consumption and improve thermal comfort for vulnerable residents, and managing other threats to biodiversity of flora and fauna.

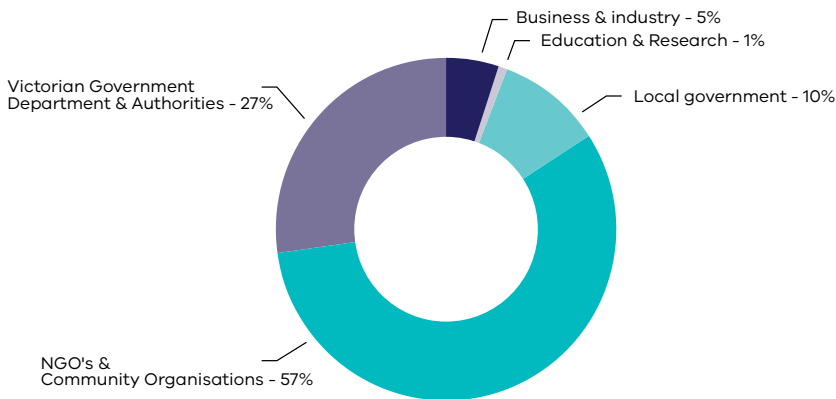
The role of corporations in driving change has not been overlooked, with business and industry-led projects being 8% and 5% of funded projects in each year.

2015/16*



* Data sourced from pages 270-283 of the 2016 DELWP Annual Report

2016/17*



* Data sourced from pages 287-304 of the 2017 DELWP Annual Report

Figure 6: Percentage of projects supported by sector in 2015/16 and 2016/17

Sustainability Fund expenditure over time

Since it began in 2004, the Sustainability Fund has committed more than \$350 million to a broad range of sustainability projects across Victoria.

Projects have ranged from small local community initiatives to large scale resource recovery investments. The Fund is wholly focussed on delivering better environmental outcomes for Victoria.

As Figure 7 illustrates, between 2010 and 2016 annual expenditure from the Sustainability Fund ranged from \$14.5 million to \$41 million. The amount of funding jumped in 2016/17 to \$52.7 million, reflecting the refreshed Priority Statement, and renewed focus on positioning Victoria as a leader in resource recovery, waste management and climate change mitigation and adaptation.

This increase is set to continue, with the Victorian Government committing substantial funding to innovative environmental initiatives in the 2016-17 Victorian State Budget with substantial commitments to address the areas of focus identified in the Priority Statement. The significant increase is reflected in the forecast expenditure in the chart below which shows committed expenditure in the Forward Estimates from the 2017-18 Victorian State Budget.

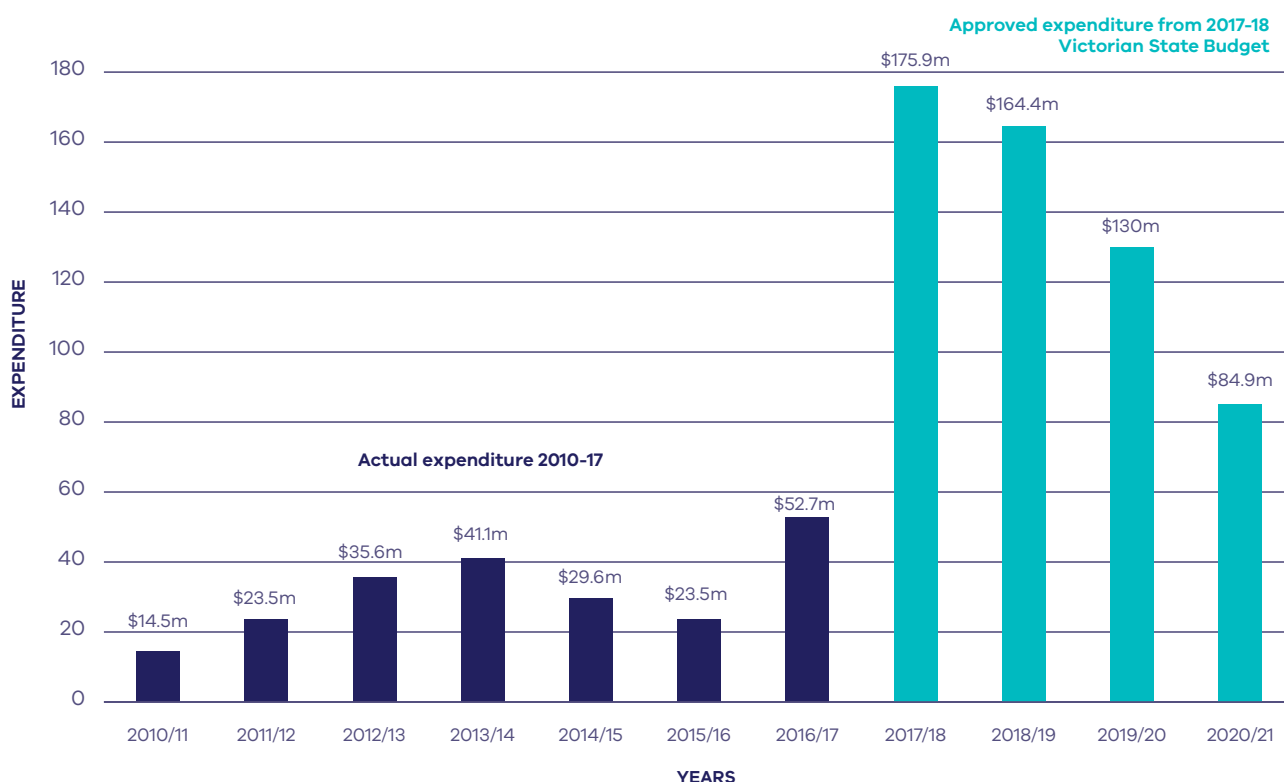


Figure 7: Illustrates the Sustainability Fund expenditure over time, with actual expenditure from July 2010 to June 2017, and forecast expenditure from the 2017-18 Victorian State Budget.



Case study: Love Food Hate Waste

What's in the bin?

Each year, Victorian households throw away 400,000 tonnes of food waste, an amount that would fill the Eureka Tower.

Helping households change wasteful behaviour

The *Love Food Hate Waste* campaign ran from June 2015 to August 2016, and focused on the issue of food waste, which forms a surprisingly large component of household waste in Victoria.

Supported by the Sustainability Fund since 2015, the success and recognition of the *Love Food Hate Waste* campaign has helped to position Victoria as being amongst the global leaders in work on food waste.

25% of the contents of an average household's garbage bin is avoidable food waste – food that was purchased with the intention of being eaten but was instead discarded.

Each year, Victorian households throw away 400,000 tonnes of food waste, an amount that would fill the Eureka Tower.

Households estimate that this thrown-away food is worth more than \$2000 a year and, if the costs of growing, producing, transporting, retailing and landfill are also included, the real environmental and financial costs are even higher.

Reducing food waste could save households money, potentially decrease CO2 emissions and substantially reduce pressure on landfill sites. Research shows that families with children, young people aged 18-24, and higher income families waste the most food.

It's clear that householders don't want to waste food, but over-buy or cook more because people want to make sure that they provide for their families and have enough food, especially with fresh fruit and vegetables.

The *Love Food Hate Waste* campaign, delivered by Sustainability Victoria, used the combination of a digital media campaign to help families find practical ways to reduce their weekly food waste, and a support program for local councils to help them deliver events and activities at a local level.

Using the simple focus of *I love leftovers*, the digital media campaign reached over one million Victorians – 700,000 via Facebook and 300,000 through videos developed for the campaign.

Evaluation showed that people exposed to the digital messages were more aware of the amount of food they waste and the impact this has on climate change, compared to those who hadn't seen the campaign.

Sustainability Victoria also worked with 11 local governments on local *Love Food Hate Waste* events and workshops, as well as providing material and training to all Councils to support the delivery of local projects.

The campaign was awarded with two Public Relations Institute of Australia National Awards and further endorsement has come through the campaign's strategy and tools being adopted by similar programs in New South Wales and New Zealand.



Five biggest type of avoidable food waste sent to landfill by Victorian households each year

- 1 **64,500 tonnes of bread, pastry and biscuits**
- 2 **51,000 tonnes of pre-prepared and home cooked meals**
- 3 **35,000 tonnes of dairy and eggs**
- 4 **31,500 tonnes of fresh vegetables**
- 5 **22,500 tonnes of fresh fruit**

Figure 8: Avoidable food waste sent to landfill by Victorian households each year

Case study: Victorian Residential Efficiency Scorecard

Ten-star rating for home energy use



Everyone would like to reduce their household energy costs, but knowing what to do next is the tricky part.

The Victorian Residential Efficiency Scorecard assesses the energy rating of existing houses, and helps householders make informed decisions about improvements to boost their home's energy efficiency.

"The scorecard will help all Victorians understand and value the features of energy efficient homes."

Accredited assessors visit homes and examine fixed features – such as heating and cooling systems – putting data into a web tool that creates an energy-use rating out of a possible ten stars. A high star rating means a home will use less energy, and cost less to run than a home with a lower star rating, and reduce carbon emissions from energy used to heat and cool properties, reducing our climate impact.

Scorecard Manager, April Muirden, of the Department of Environment, Land, Water and Planning, said existing homes are often performing poorly as most were built before energy standards. "The scorecard will help all Victorians understand and value the features of energy efficient homes."

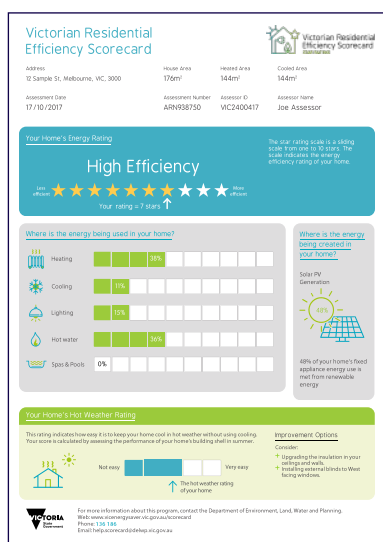
"Many people know about the simple things we can do – like using energy efficient light globes – but when it comes to the next level, we're often unsure what improvements are relevant or suitable in our home. This assessment gives householders clear, tailored recommendations on where to focus their efforts."

The Scorecard translates the complex interactions that influence home energy use into an easy-to-understand star rating, showing how well a home copes with Victoria's hot and cold weather and how expensive it can be to keep it comfortable. This allows householders to compare energy use with similar homes, or compare different renovation options, and to quickly see how to save money on energy bills.

The rating considers various elements of a home which are otherwise difficult to assess such as construction materials, major appliances, hot water system, insulation, lighting and any renewable energy sources.

The Scorecard also includes an assessment of the hot weather performance of homes, rating how easy it is to keep your house cool on hot days without using the air conditioner.

April said solutions often included dealing with gaps and cracks and draught-proofing – everything from unsealed chimneys to covering up old wall vents, or





filling gaps in skirting boards and under doors. "The government-accredited assessors come with good knowledge and skills and they can provide practical advice on next steps to increase your energy efficiency rating."

The Scorecard and web tool were developed and piloted over a number of years, with more than 300 homes assessed so far. In April 2018, the program will be broadened to cover more locations, with support from the Sustainability Fund continuing until 2020.

Currently assessments are available in metropolitan Melbourne, Geelong, Gippsland and Warrnambool south-west coast, with more accredited assessors and locations to come.

April points out the potential for the Scorecard to stimulate and promote better energy efficient products. "With this objective rating scale, businesses can prove the effectiveness of their products – where once they were competing alongside products that may not have delivered actual energy efficiency rewards."

The Victorian Residential Efficiency Scorecard has a strong future. A version of the Scorecard is being developed under the National Energy Productivity Plan so that other states can trial this Australian-first home energy rating tool.

For more information or to book an assessment go to:
www.victorianenergysaver.vic.gov.au

Improving Energy Efficiency in Victoria's Public Housing

The Victorian Residential Efficiency Scorecard will be used to make Victoria's public housing more comfortable and energy efficient for householders.

The cost of utilities has hit many Victorians hard and has been particularly challenging for those in public housing who are on reduced incomes.

EnergySmart Public Housing, part of the Home Energy Assist program, will establish a baseline for the current energy and thermal performance of public housing and undertake a range of actions to improve that performance.

The program includes retrofitting old inefficient hot water systems and space heaters in 1300 households with an energy efficient alternative – at no cost to the tenant. Benefits could include reduced greenhouse gas emissions and energy usage, lower energy bills and a more comfortable living environment for householders.

A baseline assessment of 200 dwellings will be done using the Scorecard to better understand current rates of energy efficiency and plan for future opportunities to limit energy related greenhouse gas emissions.

By providing better insulation and draught sealing to the floors, walls and roofs there will be less heat transfer in winter and summer.

The results of the program will be evaluated and these learnings used to inform further decision-making around future public housing initiatives.

A win for the environment and for some of Victoria's most disadvantaged households.

Case study: Biodiversity – Threatened Species

Building biodiversity in rolling green hills



Swamp Antechinus
- Photo courtesy of Flickr User Michael Sale

It's a win-win outcome for the environment when enthusiastic volunteers, landcare experts, and specialist services work together.

The Swamp Antechinus is a small native marsupial and, like kangaroos, wallabies, koalas and Tasmanian Devils, it grows its young in a pouch. Typically weighing about as much as a chicken's egg, it is amongst Australia's smallest marsupials and is classified as a Threatened Species.

On the Australian mainland, the Swamp Antechinus exists only in a narrow band along the Victorian coastline, in habitats that are at risk from the impacts of development and climate change, including increased extreme weather events and fire. This small nocturnal animal lives on insects, worms and lizards supplemented with vegetable matter. Much of its traditional habitat has been destroyed by decades of logging and grazing and only around 6% of the Bass Coast area is now covered by remnant native vegetation. By assisting these native species to be more resilient to climate change we substantially reduce their risk of extinction.

The future for the Swamp Antechinus and other native species in the local area is now a bit brighter, thanks to the work of the Bass Coast Landcare group, with

support from DELWP's Threatened Species program which provided a \$24,000 grant. Local landowners and volunteers planted out 6000 seedlings over three community planting days around the Three Creeks area near Kilcunda to create new Antechinus-friendly, fenced-off habitats.

The success of these types of local revegetation projects depends on getting support from local landowners, having enthusiastic volunteers willing to help and being able to access landcare experts and specialist services like fencing, weed control and wildlife population surveying.

The Three Creeks revegetation project involved an enthusiastic local group of Landcare volunteers. They provided the muscle to put the seedlings in the ground, local landowners saw the benefits that this project would create for their properties, and the funding helped to fence off the newly planted areas around the steep creek beds protecting seedlings, creek banks and cattle.

According to Dave Bateman, Natural Resource Management Coordinator, at Bass Coast Landcare, this is typical of the win-win outcomes that community projects produce for the environment and for local landowners.

"We generally target areas of farms that are already eroded and that are often dangerous for cattle. So as well as the environmental outcomes, this sort of

"Decades of logging and grazing have destroyed traditional habitat and only around 6% of the Bass Coast area is now covered by remnant native vegetation."

revegetation work typically creates shelter benefits for livestock, makes farms more aesthetically pleasing to look at, and often improves the capital value of farms as well."

Technology now makes it easier to monitor the outcomes of these revegetation projects. The availability of relatively low-cost equipment such as infrared cameras and drones makes it possible to quickly and easily collect baseline information and monitor wildlife.

Whilst the Swamp Antechinus has been spotted in some of the few local areas of remnant vegetation, this newly protected area will be starting with just four recorded bird species.

Revegetation projects don't produce results overnight and the newly protected area will be resurveyed in one, three and five years' time to see whether this local biodiversity initiative has created a landscape that is equally attractive to the eyes of humans and Antechinuses. The project will also assist other biodiversity in the area.

Three Creeks Landcare Group President Nick Sibly and Yasmin Gloria at one of three community planting days on Chris Puyol's property



Case study: Litter Hotspots

A unique mix of government and community partners working together to reduce litter in Melbourne's waterways

Cooling the hotspots

Litter is more than an eyesore. It causes major environmental and health damage and costs the Victorian community around \$80 million each year in clean-up costs.

It's a problem made more acute by the ability of litter to travel by water through the catchments of Melbourne into creeks and rivers and Port Philip Bay.

A multi-faceted approach was at the heart of the Litter Hotspots Program, developed by the Metropolitan Waste and Resource Recovery Group and funded by a \$2.1 million grant from the Sustainability Fund.



Maribyrnong City Council and Footscray business traders partnering to reduce street litter.

Using this funding, the Litter Hotspots Program has supported 35 local projects over three years, which have played an important role in reducing litter across Melbourne's waterways.

Outcomes from the projects included 179 tonnes of litter being collected – including more than 1.29 million cigarette butts – micro-plastics being identified as a new source of environmental risk and development of new, cost-effective, litter-collection technologies.

The program evaluation showed that the projects resulted in significant litter reduction (up to 96.8%) at 436 hotspot sites. The evaluators highlighted that the delivery approach – including good project management, operational delivery support, grants, and partnership, collaboration and capacity building components – was a key factor in the success and effectiveness of the program.

Another success aspect was the leverage that these types of local community grants can create. In total, resources available for the 35 Hotspot projects were effectively doubled through an equal amount of cash and in-kind support coming from funded organisations and project delivery partners.

Another major benefit from these types of litter reduction programs is their potential to create a virtuous circle of behaviour. Littering behaviour is contextual, which means that people are less likely to litter an area that is already clean.

According to Stan Vermeeren, Program Coordinator at the Metropolitan Waste and Resource Recovery Group, it can be summed up as clean equals clean.

"If a place looks really bad, then you have no respect for it and you don't treat it very well. If something looks and feels clean, if it is looked after and loved, then you are much more likely to have your behaviour in sync with that".

This type of attitude shift is particularly important because so many of Melbourne's waterways flow into Port Philip Bay. As Melbourne's population grows, the outcomes of programs like Litter Hotspots will help to set up the Bay as a place that future generations will still be able to enjoy.



Litter Hotspot leaders celebrating their achievements.

Solutions to this problem require a mix of government and community partners working together to build local infrastructure, involvement of local communities and enforcement of anti-littering laws.

Ten examples of local projects funded through the Litter Hotspot Program

City of Greater Dandenong – cigarette butt litter prevention campaign

Reducing cigarette butt litter pollution in and around the rain gardens that filter through to nearby Dandenong Creek. (\$15,000)

City of Whittlesea – Cover Your Load Campaign

Changing the long term behaviour of residents using the Wollert Landfill and the Cooper Street Recycling Precinct. (\$14,300)

Friends of Williamstown Wetlands' Wader – Beach For Birds Not Litter Project

Identifying the nature and extent of litter that is washing up on Wader Beach just east of the mouth of Kororoit Creek near Williamstown. (\$8,000)

Hobsons Bay City Council – Cigarette Litter Reduction Project

Reducing cigarette butt litter at six key hotspots identified as impacting on the health and amenity of local beaches and waterways. (\$42,000)

Manningham City Council – Development of 'Riversafe'

Trialing the use of low-cost maintenance gross pollution trap prototypes to manage the collection of stormwater litter pollution. (\$175,000)

Maroondah City Council – My Mullum Mullum Creek Project

Reducing small litter and dog poo along the Mullum Mullum Creek trail in Maroondah. (\$14,535)

Melbourne City Council

– Food Businesses and Stormwater Pollution Project

Improving the water quality of stormwater run-off from Chinatown. (\$7,000)

Monash City Council – Keep Kingsway Clean

A shopping strip trader engagement program focusing on protecting stormwater from cigarette butt litter, oils and food waste arising from traders in Kingsway, Glen Waverley. (\$14,000)

Nillumbik Shire Council – Ramp Up Litter Prevention

Transforming Eltham Skate Park and the Bridge Street underpass from an area that is heavily littered to a site that sees less litter entering the nearby Diamond Creek. (\$14,420)

Wyndham City Council – Hook, Line and Litter

Tackling fishing-related litter at key fishing locations along the Werribee River and Werribee South Foreshore. (\$9,930)



As part of the City of Monash's Keep Kingsway Clean Litter Hotspot project, 32 local food traders received multiple one-on-one visits and a bilingual poster explaining the local sewage and stormwater systems.

Sustainability Fund

1 July 2015 – 30 June 2017

The Sustainability Fund is allocated to programs and specific projects that align to the legislated purpose, the strategic objectives and to government policy. These programs often result in the establishment of grant rounds, and projects funded by these grants are outlined in the following pages.

Programs Funded 2015/2016*

Living Victoria Water Rebate	\$3.03m
A Cleaner Yarra and Port Phillip Bay	\$1.59m
Getting Full Value	\$2.21m
National Association of Charitable Recycling Organisations (NACRO)	\$1.20m
Threatened Species	\$6.00m
Climate Change Grants	\$0.80m
Climate Change Research	\$0.23m
Climate Change Adaptation	\$0.20m
Victorian Adaptation and Sustainability Partnership	\$1.25m
Driving Investment for New Recycling	\$0.30m
Community Sustainability Infrastructure Fund	\$0.57m
Household Chemical Collection	\$2.65m
Love Food Hate Waste	\$0.32m
Community Education on Waste	\$0.09m
Victorian Litter Plan	\$0.05m
Optimising Kerbside Collection System	\$0.09m
Climate Change Engagement	\$0.20m
Metropolitan Local Government Waste and Recovery Fund	\$0.25m
Illegal Dumping Strikeforce Program	\$1.70m
Sustainability Fund Operations	\$0.50m
Total payments	\$23.22m

* See pages 269-270 of the DELWP 2016 Annual Report

Programs Funded 2016/2017*

A Cleaner Yarra and Port Phillip Bay	\$1.57m
Advanced Organics Processing Technology	\$0.01m
Back to Earth	\$0.22m
Bringing our EPA into the Modern Era	\$2.10m
Climate Change Adaptation Plan	\$0.02m
Climate Change Research Grants – Climate Change Adaptation 2015-16	\$0.15m
Collaborative Councils	\$0.55m
Community Education on Waste	\$0.01m
Community Sustainability Infrastructure Fund	\$0.41m
Contaminated Crown Land Assessment and Remediation	\$1.81m
Driving Growth in Renewable Energy	\$2.58m
Driving Investment in New Recycling	\$0.02m
Energy Efficiency and Productivity 2015-16	\$1.87m
Getting Full Value	\$1.88m
Industry Waste Reduction	\$0.09m
Jobs and Innovation in Resource Recovery	\$1.83m
Latrobe Valley Package – Energy Efficiency Initiatives	\$0.50m
Love Food Hate Waste	\$0.03m
Managing Victoria's Waste Materials - Illegal Dumping Strikeforce	\$2.30m
Metropolitan Local Government Waste and Resource Recovery Fund	\$0.25m
National Association of Charitable Recycling Organisations (NACRO)	\$0.80m
Optimising Kerbside Collection System	\$0.01m
Preserving Victoria's unique Biodiversity	\$17.46m
Reducing the environmental impact of plastic bags – transitioning to ban	\$0.03m
Reinstating Victoria as the national leader in Climate Change	\$6.44m
Saving Energy, Growing Jobs	\$6.37m
Securing our Energy Future	\$1.95m
Understanding and Adapting to Climate Change	\$0.57m
Victoria Litter Plan	\$0.15m
Sustainability Fund Operations	\$0.74m
Total payments	\$52.69m

* See pages 285-286 of the DELWP 2017 Annual Report

Sustainability Fund projects funded by grants 2015/2016*

The Sustainability Fund enters into a Memorandum of Understanding with a number of agencies to administer grant programs that further support the strategic priorities of the Fund.

The following table lists all of the projects funded by grants in the 2015/2016 year, originating from programs (see page 24) allocated funding from the Sustainability Fund. All programs and grant funded projects are also published annually in the DELWP Annual Report.

Funding Program	Recipient	Project	Funding Support
Climate Change Competitive Grants This program is managed by DELWP	City of Greater Geelong	Shellfish reefs for shoreline protection of highly erodible coasts Shellfish reefs have been used in a range of environments in North America to mitigate the effects of storm tides. These structures have the potential to restore habitat in the shallow waters of Port Phillip and Western Port Bays.	\$80,000
	East Gippsland Shire Council	East Gippsland renewable energy feasibility with innovative options Investigate renewable energy feasibility for East Gippsland, including potential feedstock, distribution network conditions, heat and power customers and community appetite for different technologies.	\$80,000
	Hepburn Shire Council	Climate resilient recreation facilities Strategy to minimise the vulnerability of Council's recreation facilities to climate change, including innovative solutions to reduce carbon emissions and water/resource consumption.	\$67,670
	Moreland City Council	Working together to cool communities Investigate how the Urban Heat Island Effect's negative impacts can be minimised for vulnerable social housing residents, creating a replicable model for wider implementation.	\$80,000
	City of Yarra	Embedding green infrastructure best practice toolkit Develop a toolkit to embed evidence-based green infrastructure outcomes into local government decision-making and operations, to increase tree planting, water sensitive urban design and other green infrastructure.	\$80,000
	Yarra Ranges Council	Eastern sporting savers Engagement program helps the region's sports clubs save on their energy bills, delivered by the seven councils of the Eastern Alliance for Greenhouse Action (EAGA).	\$30,000
	South Gippsland Shire Council	Investigation into the impact of climate change on seawalls Assessing the condition and adequacy of the existing seawalls/drains in South Gippsland and Wellington shires against a combined king tide/storm surge and climate change sea level rise.	\$80,000
	Warrnambool City Council	Barwon South West local coastal hazard assessment (phase 1) G21 Coastal hazard assessment for far South West Coast councils.	\$80,000
	Towong Shire Council	Banking on our solar future – innovation for resilient communities Demonstration solar bank to educate the community and provide opportunities for individuals and business owners to make informed investments in energy storage and solar electricity systems.	\$80,000
	Indigo Shire Council	Battery storage revolution Establish a battery storage demonstration site to build understanding of the technology and the energy storage benefits for vulnerable communities.	\$45,000

* See pages 270-283 of the 2016 DELWP Annual Report

Funding Program	Recipient	Project	Funding Support
Climate Change Non-competitive Grants This program is managed by DELWP	Mount Alexander Shire	Mount Alexander waste to energy feasibility study A study of three identified waste-to-energy technologies that could be used at the Castlemaine waste and heavy industry precincts.	\$10,000
	Pyrenees Shire Council	Beaufort sustainable water use plan A sustainable water use plan for Beaufort township, matching alternative water sources to potential users to reduce current demand on the water supply.	\$10,000
	Bass Coast Shire Council	Communities making energy together across southern Gippsland Assessing the feasibility of mid-to-large scale climate change mitigation and adaptation projects in partnership with the community.	\$10,000
	Gannawarra Shire Council	Be cool in Gannawarra Development of heat packs, resources and information to support vulnerable clients identified in the Home and Community Care and Maternal Child Health assessment processes.	\$10,000
	Golden Plains Shire Council	Online mapping tools and templates – fire, conservation and construction New tools and templates to support the community to produce informed environmental, fire and land management plans.	\$10,000
	Borough of Queenscliffe	Supporting Queenscliff and Point Lonsdale to prepare for climate change Providing householders, businesses and schools with one-to-one advice on energy efficiency and renewable energy options.	\$10,000
	Moyne Shire Council	East Beach seawall design Design a replacement rock seawall to defend East Beach, Port Fairy from forecast sea level rise.	\$10,000
	South Grampians Shire	On for young and old: kindergarten and senior citizen facilities Assessing kindergartens and senior citizen's buildings in the Shire for thermal efficiency, water supply reliability and energy efficiency, and implementing value-for-money solutions.	\$10,000
	Moorabool Shire Council	Sustainable buildings initiative Assessment of Council-owned buildings to identify priority actions to reduce Council emissions and expenditure.	\$10,000
	Northern Grampians Shire Council	Supporting vulnerable households to respond to climate risk Tailored, practical advice on behaviour change, low- cost retrofits and simple energy efficiency measures to improve the thermal comfort and health and wellbeing of individuals.	\$10,000
	Campaspe Shire Council	Campaspe community clubs combat climate change Assessing and climate-proofing vulnerable community recreation reserves to minimise greenhouse, energy and water costs.	\$10,000
	West Wimmera Shire Council	Paving the way Installing solar panels and engaging the community in a positive climate change response, using social media to promote and track Council's solar power generation.	\$10,000

The majority of grants supported through the Fund are contested however occasionally uncontested grants are provided to target local government, and specific issues within their communities.

Moira Shire Council	Collaborative climate change reporting Developing a coordinated environmental sustainability reporting program.	\$10,000
South Gippsland Shire Council	Communities making energy together across southern Gippsland Assessing the feasibility of mid-to-large scale climate change mitigation and adaptation projects in partnership with the community.	\$10,000
Horsham Rural City Council	Green waste makes a greener place Diverting three waste streams into a local composting system, with the compost and mulch used in municipal parks, gardens, ovals and with street trees.	\$9,000
Macedon Ranges Shire Council	Designing a revolving energy fund for community-use buildings Identifying a model for a revolving energy fund for energy efficiency upgrades to community buildings.	\$9,500
Murrindindi Shire Council	Collaborative climate change reporting Developing a coordinated environmental sustainability reporting program.	\$10,000
Central Goldfields Shire	Yarriambiack. Planning for the future. Conducting energy audits on selected Shire buildings and identifying measures to reduce energy use; examining options for more energy efficient management of Council's vehicle fleet.	\$10,000
Benalla Rural City Council	Collaborative climate change reporting Developing a coordinated environmental sustainability reporting program.	\$10,000
Buloke Shire Council	Community facilities sustainability audit Conducting energy and water sustainability audits in community buildings with the highest energy use in Buloke's major towns.	\$10,000
Warrnambool City Council	Barwon South West coastal hazard assessment phase 1 (non-competitive) Phase 1 of Coastal Hazard Assessment for Barwon South West Coast.	\$30,000
Wodonga Council	Collaborative climate change reporting Developing a coordinated environmental sustainability reporting program.	\$10,000
Alpine Shire Council	Plantation waste to energy Assess potential for plantation waste to be used in co-generation behind-the-meter scheme in a business or community facility.	\$10,000
Nillumbik Shire Council	Adapting to a new climate Developing a toolkit for use by householders to identify their own risks from the impacts of climate change and to plan mitigation actions.	\$9,970
Ararat Rural City Council	Stay in play: Recreation reserves and climate change workshop A free workshop and information about best-practice principles for turf maintenance in recreation reserves, in drought-affected rural areas.	\$8,000
Hepburn Shire Council	Carbon free communities Facilitating community conversations about towns and localities becoming carbon neutral.	\$10,000
Towong Shire Council	Beating the heat – cooling canopies for community resilience Increasing the Shire's urban park/street tree canopy to 40% by 2025 to contribute to cooler urban environments and build community resilience in heat events.	\$10,000

Indigo Shire Council	Collaborative climate change reporting Developing a coordinated environmental sustainability reporting program.	\$10,000
Rural City of Wangaratta	Collaborative climate change reporting Developing a coordinated environmental sustainability reporting program.	\$10,000
Mitchell Shire Council	Feasibility study for the Chittick Park micro-grid project Reducing energy use at Council and community facilities by determining design and funding implications of an electricity generation, storage and distribution network based on rooftop solar panels.	\$10,000
Baw Baw Shire Council	Baw Baw Shire community responding to climate change Training sessions to raise climate change mitigation and adaptation actions in the local community, businesses and amongst Council staff.	\$10,000
Corangamite Shire	Corangamite biolinks project A coordinated, strategic approach to creating landscape-scale vegetation corridors or 'biolinks' in the Corangamite region to mitigate impacts of climate change, link natural assets and provide habitat for wildlife.	\$10,000
Surf Coast Shire Council	Local food program Supporting the Shire's agriculture sector and local producers to become more resilient to the effects of a hotter, dryer climate by improving sustainable agriculture practices and exploring local issues and opportunities.	\$10,000
Swan Hill Rural City Council	Opportunity for a regional composting facility – Swan Hill Investigating the viability of a regional composting facility to reduce fruit dumping by the horticulture industry, transforming a problem in a valuable resource and improving the water efficiency on irrigation crops by using compost as a soil conditioner.	\$10,000

Funding Program	Recipient	Project	Funding Support
Climate Change Research Grants This program is managed by DELWP	Climate KIC (Knowledge Innovation Community) Australia, represented by the University of Melbourne	European Union Climate Knowledge Innovation Community Summer School Grants	\$95,000
	Australian Research Council Centre of Excellence for Climate System Science, represented by the University of Melbourne	ARC Centre of Excellence Scholarship	\$70,000
	Australian Research Council Centre of Excellence for Climate System Science, represented by Monash University	ARC Centre of Excellence Scholarship	\$70,000

Funding Program	Recipient	Project	Funding Support
National Association of Charitable Recycling Organisations Grants This program is managed by DELWP	Benalla Uniting Church Bendigo UnitingCare Outreach Brotherhood of St Laurence Cooinda Hill Inc Diabetes Australia Vic Doncare Encompass Community Service Inc Friends of Hillside Lodge Inc Kilmore Anglican Parish Op Shop Lifeline Geelong Barwon Region Inc Lifeline South West Victoria Inc Paravin (Spine and Limb Foundation VIC) Red Cross (Australia) REMAR Rotary Club of Warrandyte Donvale Inc Op Shop RSPCA Salvation Army Cranbourne Corp – Salvo Access Thrift Shop Salvos Stores SIDS and Kids St Vincent de Paul Society Victoria Inc Violet Town Community Opportunity Shop	To mitigate the costs imposed on Victorian charities by illegal dumping.	\$1,200,000

Case study: Back to Earth South Eastern Garden Competition



The Back to Earth campaign in 2016 aimed to educate and encourage households to allocate organic waste to the correct council bin and increase organic recycling. The average Melbourne household garbage bin contains around 40-50% food and garden waste, leading to over 300,000 tonnes of organic waste collected from the wrong bin each year.

Community groups in participating council areas were invited to nominate gardening projects to receive financial assistance, with the local public voting online for their top four favourite projects and the winner chosen by a panel of expert judges.



Funding Program	Recipient	Project	Funding Support
Threatened Species Grants This program is managed by DELWP	Arthur Rylah Institute	Roundsnout Galaxias recovery actions	\$27,000
	Arthur Rylah Institute	McDowalls Galaxias and East Gippsland Galaxias recovery actions	\$27,000
	Arthur Rylah Institute	Dargo Galaxias recovery actions	\$23,000
	Arthur Rylah Institute	Predator removal to save Shaw Galaxias from extinction	\$45,000
	Arthur Rylah Institute	Tapered Galaxias and West Gippsland Galaxias recovery actions	\$23,000
	Arthur Rylah Institute	Helping hand: Glenelg freshwater mussel recovery actions	\$35,000
	Arthur Rylah Institute	Barred Galaxias recovery actions	\$45,000
	Arthur Rylah Institute	Determining threat management options for Masters' Snake	\$28,675
	Arthur Rylah Institute with Parks Victoria	Management to aid the survival of the highly localised Heath Skink in Victoria	\$51,500
	Department of Environment, Land, Water and Planning (DELWP)	Threat busting in key Jericho Wire-grass populations	\$10,300
	Arthur Rylah Institute with La Trobe University	Mapping and monitoring <i>Caltha introloba</i> Herbland Community	\$49,900
	DELWP with Royal Botanic Gardens (Vic)	Putting Shiny Daisy-bush back in its place: Protecting diversity and unlocking the mysteries of low seed viability	\$32,000
	Trust for Nature with Parks Victoria and DELWP	Protecting the New Holland Mouse	\$51,050
	BirdLife Australia	Reintroduction and reinforcement of the endangered Black-eared Miner (<i>Manorina melanotis</i>) to the Victorian Mallee: Translocation plan	\$20,000
	DELWP with Amaryllis Environmental	Ballantinia's road to recovery: Hydrological restoration and moving to new heights	\$52,600
	DELWP with Trust for Nature	Gippsland Plains Environment Protection and Biodiversity Conservation grassland ecosystems and flora species	\$136,200
	Trust for Nature (Vic) and Arthur Rylah Institute	Critical assessment and protection of Velvet Daisy-bush (<i>Olearia pannosa subsp. cardiophylla</i>)	\$61,700
	DELWP	Murray hardyhead recovery program	\$156,000

La Trobe University with Murray-Darling Freshwater Research Centre, Mt Buller-Mt Stirling Resort Management, Falls Creek Resort Management and Parks Victoria	Saving the threatened Alpine and Mount Stirling stoneflies	\$105,498
Zoos Victoria	Establishment of a self-sustaining captive insurance population of the Baw Baw Frog that supports wild recovery of the species.	\$46,530
North Central Catchment Management Authority with Fire Flood & Flora, Murray Darling Fresh Water Research Centre and Royal Botanical Gardens Victoria	Winged Peppercreess – in-situ monitoring and ex-situ seedbank maintenance	\$13,851
Hume City Council	Broadmeadows Valley Park – Geranium sp. 1	\$26,300
Arthur Rylah Institute with Museum Victoria	Conservation management response to the arrival of the Amphibian Chytrid Fungus at the last fungus-free population of the nationally Vulnerable (Critically Endangered in Victoria) Alpine Tree Frog	\$19,958
Port Phillip and Westernport Catchment Management Authority	Securing the future of Victoria's State emblems	\$100,000
Parks Victoria with DELWP	Yarra Ranges Endemic Shiny Nematolepis (<i>Nematolepis wilsonii</i>) protection	\$32,000
Trust for Nature (Vic)	Private land action for threatened species	\$32,700
DELWP	Rare and Restored – Orchids of the Loddon Mallee	\$88,000
Glenelg Hopkins Catchment Management Authority	Glenelg Hopkins Pine Wildling removal	\$66,000
DELWP with Tiverton Property Partners Pty Ltd, Zoos Victoria, Eastern Barred Bandicoot Recovery Team	Reintroduction of Eastern Barred Bandicoots into Tiverton, Western Victoria	\$25,000

DELWP with Mt Rothwell Biodiversity Conservation Centre, Tidbinbilla Nature Reserve, Zoos South Australia	Supporting the captive insurance population of Southern Brush-tailed Rock Wallabies	\$35,000
DELWP	Discovery Bay Coastal Park Limestone Ridge, Orchid Conservation Project	\$25,000
Arthur Rylah Institute	A survey protocol for the threatened Heath Mouse	\$15,000
Parks Victoria	Moorabool Environmental Weed Control for Rocky Chenopod communities	\$17,000
DELWP with East Gippsland Rainforest Conservation Management Network	Lowland Rainforest: Littoral Rainforest and Coastal Vine thickets of Eastern Australia – Measuring for recovery	\$25,000
Parks Victoria	Metallic Sun Orchid Protection	\$30,000
DELWP with Parks Victoria	Alpine Flora – managing threats from large introduced herbivores	\$50,000
Trust for Nature (Vic) with Parks Victoria, Royal Botanic Gardens (Vic), Southern Peninsula Indigenous Flora & Fauna Association and Australasian Native Orchid Society.	Strategic actions for Mornington Peninsula and Westernport threatened species & communities	\$84,000
Parks Victoria	Threatened orchids of Middle Yarra and the Warrandyte-Kinglake Habitat Corridor	\$50,000
DELWP with Royal Botanic Gardens (Vic)	Saving Plains Orchids	\$21,063
DELWP with Cesar Pty Ltd	Genetic sampling – critical to management imperatives of a highly fragmented threatened woodland population in Victoria	\$40,000
Nature Glenelg Trust with Deakin University	Identifying the distribution of, and restoration opportunities for, the critically endangered Western Swamp Crayfish in the Grampians	\$15,000
Parks Victoria	Plenty Gorge Park Orchid Sites	\$25,000
Yarra Ranges Council	Addressing stormwater threats to sensitive riparian ecosystems in Sassafra and Perrins Creek sub-catchment	\$70,000

DELWP	Southern right whale data assessment and risk analysis (south-east population)	\$49,628
Yarra Ranges Council	<i>Pomaderris vacciniifolia</i> protection Yarra Ranges	\$34,750
DELWP with Trust for Nature	Gippsland Plains Threatened Species and Communities - 2	\$93,800
DELWP with Recovery Team and Trust for Nature	Threatened Invertebrates of the Western Strzelecki's	\$30,100
Nature Glenelg Trust	Strategic on-ground management to retain and enhance threatened flora and ecological communities of the Mortlake Common Flora Reserve	\$13,000
Parks Victoria	Eastern Barred Bandicoot (EBB) Recovery – pest animal control in the Back Paddock, Woodlands Historic Park	\$30,000
Nature Glenelg Trust	Recovery of threatened species (Wimmera Bottlebrush and Dwarf Galaxias) in response to the permanent restoration of Gooseneck and Brady Swamps	\$30,000
Royal Botanic Gardens (Vic)	Wild Orchids of the Wimmera	\$141,572
Arthur Rylah Institute	Protecting spawning conditions for Freshwater catfish at Tahbilk Lagoon	\$32,000
Goulburn Murray Catchment Management Authority with Birds Bush and Beyond, Superb Parrot Action Group	Threatened woodland birds of the Goulburn-Murray irrigation district: Are we prioritising works in the right landscapes?	\$54,924
Nature Glenelg Trust	Protecting stream habitat for the critically endangered Glenelg Freshwater Mussel	\$25,000
DELWP with Parks Victoria and Royal Botanic Gardens (Vic)	Threatened Orchids of the West Gippsland coast	\$28,300
DELWP and Royal Botanic Gardens (Vic)	Basalt Rustyhood Translocation Project	\$25,000
DELWP	Mapping review of optimal Orange-bellied Parrot habitat	\$40,000
DELWP with Birdlife Australia	Expanded Orange-bellied Parrot winter survey	\$49,940
Arthur Rylah Institute with North East Catchment Management Authority, Fisheries Victoria	Re-establishing Macquarie perch in the Ovens River	\$84,246
Trust for Nature (Vic)	Survey of the Rayed Blue Butterfly (Wimmera form) and its food plant	\$15,200

Nature Glenelg Trust	Protecting a western basalt plains endemic: conservation for the Salt-lake Tussock Grass at Lake Linlithgow Lake Reserve	\$12,000
Nature Glenelg Trust	Rapid assessments informing critical recovery actions for threatened grassland flora of the Linear Reserves Program	\$4,000
Greening Australia with Parks Victoria	Protecting threatened icons of the volcanic plains and lakes – Salt-lake Tussock-grass	\$36,000
DELWP with Mt Hotham Alpine Resort Management Board	The design of a rock corridor linking Mountain Pygmy-possum habitat at Little Higginbotham, Mt Hotham – remove the barriers to the conservation movement	\$25,000
Trust for Nature (Vic)	Protection and augmentation of populations of seven threatened Orchid species on Trust for Nature covenanted properties in the Goldfields bio-region	\$66,500
Royal Botanic Gardens (Vic)	Reducing extinction threat by seed banking	\$6,000
Nature Glenelg Trust	Protecting threatened orchids on the urban fringe: conserving the Basalt Leek-orchid at Maam Reserve	\$5,000
Zoos Victoria	Captive-breeding to protect and recover the last lowland Leadbeater's Possum population at Yellingbo Nature Conservation Reserve	\$19,375
DELWP	On a Wing and Prayer – protecting the Loddon Mallee's most endangered butterflies	\$77,000
Cesar Pty Ltd, Melbourne University, Zoos Victoria, DELWP, Mt Rothwell Biodiversity and Interpretation Centre, Parks Victoria, Department of Primary Industries, Parks, Water and Environment Tasmania), Victorian Eastern Barred Bandicoot Recovery Team	Eastern Barred Bandicoot gene widening project	\$55,000
Southern Otway Landcare Network	Landcare is critical	\$10,000
Cairnlea Conservation Reserve Committee of Management and Friends of Iramoo	Saving six grassland species	\$12,000
Friends of the Brisbane Ranges	Homes for Brush-tailed Phascogales	\$10,000

East Gippsland Rainforest Conservation Management Network	Peri-urban littoral rainforest stand improvement and community education program	\$19,000
Parklands Albury Wodonga	West Wodonga nest-box corridors	\$20,000
Friends of Campbells Creek Landcare Group (sponsored)	Resurrection of <i>Dianella amoena</i> along Campbells Creek	\$5,562
Upper Goulburn Landcare Network (sponsored)	Ribbons of remnant roadsides	\$20,000
Friends of the Bannockburn Bush Reserve (sponsored)	Caring for Bannockburn Bush	\$19,310
Mid-Loddon Sub-Catchment Management Group (sponsored)	Citizens Science threatened species training, monitoring and habitat restoration program	\$14,406
Mt Worth and District Landcare Group Inc	Mt Worth Strzelecki Gum biolink	\$6,220
Southern Otway Landcare Network	Community based monitoring of threatened species habitat in the Otway Ranges	\$19,660
Millewa-Carwarp Landcare Group	Rabbit eradication for the protection of threatened species	\$16,500
Whroo Goldfields Conservation Management Network (sponsored)	Gliders in the Goldfields – providing habitat and raising awareness for the endangered Squirrel Glider	\$16,000
Campaspe River and Land Management group	Australian Anchor Plant – protection; propagation; revegetation	\$15,779
Middle Yarra Landcare Network (sponsored)	Future-proofing threatened species and their habitat within the Middle Yarra River catchment	\$19,968
Friends of Brisbane Ranges Inc (sponsored)	Nest boxes for Brush-tailed Phascogale habitat and monitoring	\$9,300
Cairnlea Conservation Reserves Committee of Management	Endangered reptile habitat restoration and improvement	\$18,150
Friends of Sassafras Creek Inc	Friends of Sassafras Creek battle weed infestations to save seven threatened species in Sassafras Creek.	\$19,900
Southern Otway Landcare Network	Restoring the Woodland Habitat of the Leafy Greenhood on Cape Otway	\$17,204

Kulkyne Way Landcare Group	Understanding Hopbush dieback and potential implications for Mildura Ogyris in north west Victoria	\$4,320
Boolarra South Landcare (sponsored)	Boolarra South Landcare threatened species training workshops, and on-ground Works Program	\$17,800
Pinkerton Landcare & Environment Group Inc	Pinkerton Link Project	\$12,220
Kowree Farm Tree Group (sponsored)	Kids creating habitat for Cockies	\$17,900
Post Office Hill Action Group (POHAG) (sponsored)	Delivering Habitat for Phascogales on Post Office Hill	\$4,460
Northern Plains Conservation Management Network	Northern Plains Grasslands threatened flora and fauna project	\$19,991
Friends of Nyah-Vinifera Forest – through Friends of the Earth Melbourne	Community surveying and weed removal in Nyah-Vinifera Park	\$12,100
Friends of Mallacoota (sponsored)	Hooded Plover nesting sites protection at Betka Beach	\$2,000
Ararat Regional Bio-Links Network Inc	Restoration of the native grasslands areas within part of the Ararat Cemetery Creek bio-link	\$4,428
St Arnaud Field Naturalist Club Inc.	Protection and Recruitment of the depleted iconic Grey Grass-tree (<i>Xanthorrhoea glauca</i> ssp. <i>angustifolia</i>)	\$8,500
Dunmoochin Landcare Group	Expanding Orchid Conservation on private land in the Dunmoochin Landcare Region	\$8,642
Dja Dja Wurrung Clans Aboriginal Corporation	Mt Barker Temperate Woodland Bird Restoration	\$19,900
Hughes Creek Catchment Collaborative (sponsored)	Brush-tailed Phascogale	\$7,850
Nullawil Landcare Group	Nullawil threatened species revegetation	\$2,640
Lalbert Landcare Group (sponsored)	Goschen Bushland Reserve – community action to protect threatened flora and fauna	\$18,000
Greta Valley Landcare Group Inc	Protecting paddock trees for threatened species	\$20,000
Leigh Catchment Group	Saving the Growling Grass Frog from Chytrid Fungus	\$10,640

Milawa Markwood Oxley Landcare Group	Nesting boxes for hollow dependant threatened species in a fragmented landscape	\$13,500
Strathbogie Ranges Conservation Management Network	Striped Legless Lizard Surveys – Cluster 8, North East Vic	\$17,000
Yackandandah Landcare Group (sponsored)	Creating homes and habitat for Yackandandah Creek threatened species: A community-led initiative	\$14,050
Friends of Turtons Creek (sponsored)	Turtons Creek survey for South Gippsland Spiny Crayfish and habitat rehabilitation	\$20,000
Wedderburn Conservation Management Network	Conservation of Mallee fowl in the Wychitella Nature Conservation Reserve	\$16,665
Birchip Landcare Group (sponsored)	Birchip Buloke Woodlands Protection	\$17,600
South Beach Wetlands and Landcare Group	Lathams Snipe Project	\$14,440
Gippsland Plains Conservation Management Network	Artificial hollows for the endangered Masked Owl	\$18,000
Moorabool Catchment Landcare Group	Raising awareness of threatened grasslands and their species in the Moorabool Region	\$20,000
Fungimap Inc	Develop surveys, training and data collection systems to improve the conservation status of Clasp Hypocrepopsis	\$20,000
Koetong Landcare Group	Protecting habitat values and mitigating threats to the Summer Leek Orchid in Pheasant Creek Reserve	\$16,740
Friends of Kurth Kiln, Tall Astelia Recovery Group, Kurth Kiln Regional Park	Tall Astelia Recovery Project, Kurth Kiln Regional Park: Phase 1 – plant propagation	\$3,850
Cardinia Catchment Landcare Inc.	Cardinia Creek Threatened Species Protection Program	\$19,500
Mt Korong Eco Watch (sponsored)	Rewilding Korong Ridge – short story nursery	\$8,800
Christmas Hills Landcare Group (sponsored)	Christmas Hills Community – protecting our threatened species.	\$19,915
3 Creeks Landcare Group	Creating Growling Grass Frog and Orange-bellied Parrot habitat in 3 Creeks	\$20,000
Latrobe Catchment Landcare Network	Gippsland Red Gum Woodland species win hearts through community engagement	\$20,000

Wooragee Landcare Group (sponsored)	Protecting our fauna through empowering people	\$12,700
Warrenbayne Boho Land Protection Group Inc (sponsored)	Railway Reserve Links	\$5,366
Friends of Merri Creek (FoMC)	Matted and tangled: Fine scale threat reduction for urban Matted Flax-lily populations	\$19,890
Bass Valley Landcare Group	Holden the Ground – predator proofing and fox control at Holden Proving Ground	\$20,000
Friends of Winton Wetlands (sponsored)	“Friends, Frogs and Fishes”: practical community actions to help monitor and restore a wetland system	\$11,200
Jack and Albert River Restoration Committee (JARR) (sponsored)	Bringing the community together to tackle threatened species conservation	\$20,000
Binginwarri Landcare Group (sponsored)	Protecting and enhancing Warm Temperate Rainforest	\$20,000
Phillip Island Landcare Group Inc (sponsored)	Mapping, monitoring, protecting and enhancing Phillip Island Coastal Moonah Woodlands	\$20,000
Watson Creek Catchment Landcare Group (sponsored)	Protecting Dwarf Galaxias in Watson Creek Catchment	\$19,800
Southwest Mornington Peninsula Landcare (sponsored)	Protect and Connect – restoring bushland on properties adjoining Peninsula Gardens Bushland Reserve	\$20,000
Powlett Project Landcare Group (sponsored)	Protecting the Powlett: Improving Australian Grayling and Orange Bellied Parrot habitat	\$20,000
Friends of Winton Wetlands (sponsored)	“That’s one giant leap!” Increasing the availability of habitat for threatened arboreal mammals	\$10,600
Friends of Terrick Terrick National Park Inc (sponsored)	Fabian’s threatened flora and fauna species survey	\$9,480
Entomological Society of Victoria (sponsored)	Survey for the Cryptic Sun Moth Synemon Theresa	\$7,150
Port Campbell Public Purposes Reserve (sponsored)	Port Campbell biolinks – threatened species protection	\$10,490
Upper Maribyrnong Catchment Group (sponsored)	Protecting remnants, enhancing biodiversity and linking corridors project	\$20,000

Castlemaine Landcare Group (sponsored)	Protecting Bibron's habitat in Happy Valley Castlemaine, stage 1	\$4,120
Longwood Plains Conservation Management Network	Baits, boxes and biodiversity corridors for Bush-stone Curlews and Squirrel Gliders in Longwood Plains	\$19,725
Mt Korong Eco-Watch (sponsored)	Rewilding Korong Ridge – short-storey planting, retelling a threatened understorey	\$16,550
Violet Town Action Group	Honeysuckle Creek, Violet Town: A hot-spot for threatened fauna	\$19,156
Rainbow & District Landcare Group Inc.	Preservation, protection and restoration of Rainbow's Buloke populations	\$13,980
Friends of the Eltham Copper Butterfly (sponsored)	Copper Fields: Sustaining change for the Eltham Copper Butterfly	\$19,832
Kinglake Landcare Group (sponsored)	Kinglake Landcare threatened species monitoring, survey, and revegetation	\$19,000
Hindmarsh Landcare Network	Project Hindmarsh 2016	\$20,000
Southern Ranges Environment Alliance	Muddy Creek Headwaters biodiversity protection program	\$20,000
Kilmore Mechanics Institute & Free Lending Library Inc.	Kilmore Monument Hill Reserve threatened species conservation and community education project.	\$11,660
Ovens Landcare Network (sponsored)	What's in our patch – Silver Tea-tree	\$6,300
Korumburra Landcare Group (sponsored)	Protecting and enhancing Giant Gippsland Earthworm and Strzelecki Gum habitat in the upper Powlett catchment	\$20,000
Meredith Police Paddocks Support Group (sponsored)	Meredith Police Paddocks threatened species project	\$8,980
Cardinia Environment Coalition Inc.	Improving the habitat for Southern Brown Bandicoot at Five Mile Reserve	\$13,860
Mt Rothwell Landcare Volunteers Inc.	Let the threatened natives thrive: let's be rabbit free	\$20,000
Upper Loddon & Avoca Landcare Network	Ullina and Talbot remnant Pimelea spinescens and Victorian Volcanic Plain grassland awareness raising and on-ground conservation	\$9,220
Ballarat Environment Network	Ballarat Environment Network threatened species project	\$11,660

Case study: Household Chemical Collection Program – Sustainability Victoria



Attribution: © Sustainability Victoria 2018

The Household Chemical Collection Program (HCCP) provides the Victorian community with free, safe accessible and environmentally responsible disposal options for everyday household chemicals and target products.

Household Chemicals can be dangerous, and the safe disposal of these chemicals will keep them out of our waterways, reduce the risk of poisoning and keep our homes safe and minimise environmental pollution and bushfire hazards

It is estimated that 94 per cent of Victorians have reasonable access to HCC services.

Sustainability Victoria provides two services to facilitate the collection of household chemicals across the state:

- a mobile HCC service- 'Detox your Home' for the disposal of toxic household chemicals, with 31 collections held annually across regional and metropolitan Victoria; and
- a network of 30 permanent drop off sites for low risk target products including paint, batteries and fluorescent lights, which are located at 26 council owned transfer stations and 4 privately owned transfer stations.

The mobile events assisted more than 3,500 people to safely dispose of over 1,700 tonnes of harmful household chemicals.

Funding Program	Recipient	Project	Funding Support
Smarter Resources Smarter Business Grants This program is managed by Sustainability Victoria	Melba Support Services	Resource assessments: energy efficiency assessment	\$4,285
	Skillinvest		\$4,600
	Del Re National Food Group		\$5,200
	Kyabram Cold Storage Pty Ltd		\$8,000
	Southern Ocean Mariculture		\$7,750
	Saltwater Coast Lifestyle Centre		\$5,700
	Wilson and Bradley		\$4,825
	Foamex Victoria Pty Ltd		\$8,000
	The Comics Lounge		\$5,000
	The Leveson		\$6,000
	AF Gason		\$6,000
	E-Laundry and Dry Cleaning Service Pty Ltd (trading as South Pacific Laundry)		\$8,000
	Western Private Hospital		\$8,000
	Goldacres Trading Pty Ltd		\$5,750
	Committee of Portland	Business champions project	\$9,800
	City of Kingston – Kingston Sustainable Business network		\$3,987
	East Gippsland Food Cluster – Event Series		\$9,650
	South Gippsland Shire Council – South Gippsland Manufacturing Event Series		\$9,500

Funding Program	Recipient	Project	Funding Support
Industry Waste Reduction Grants This program is managed by Sustainability Victoria	Zilzie Wines Pty Ltd	Materials efficiency assessment	\$10,000
	Merino and Jumbuck		\$11,415
	Southern Cross Recycling Group Pty Ltd		\$12,990
	Alberton Timber and Treatment Plant Pty Ltd		\$12,460

Funding Program	Recipient	Project	Funding Support
Litter Hotspots Grants This program is managed by Sustainability Victoria	City of Greater Dandenong	Greater Dandenong cigarette butt litter prevention campaign	\$15,000
	Nillumbik Shire Council	Ramp up litter prevention – Eltham Skate Park	\$14,420
	Upper Yarra River Reserves Committee of Management	Plastic bag free Warburton – litter prevention program	\$15,000
	Wyndham City Council	Hook, line and litter	\$9,930
	Friends of Williamstown Wetlands Incorporated	Wader Beach for birds not litter – tracking the plastic	\$14,300
	Maroondah City Council	Dorset Recreation Reserve impact on Tarralla Creek	\$10,184
	Beautiful Brimbank/Friends of Kororoit Creek	Love where you live drain project	\$13,880
	Hume City Council	Smart bins, stop litter	\$14,985
	City of Whittlesea	Cover Your Load	\$14,300

Sustainability Fund projects funded by grants 2016/2017*

The Sustainability Fund enters into a Memorandum of Understanding with a number of agencies to administer programs that support the strategic priorities of the Fund.

The following table lists all of the projects funded by grants in the 2016/2017 year, originating from programs (see page 25) allocated funding from the Sustainability Fund. All programs and grant funded projects are also published annually in the DELWP Annual Report.

Funding Program	Recipient	Project	Funding Support
Biodiversity On-ground Action Grants This program is managed by DELWP	Arthur Rylah Institute	Emergency Response Framework: getting the rapid response right	\$100,000
	Arthur Rylah Institute	Intervention monitoring: Assessing the effectiveness of biodiversity management	\$420,000
	Arthur Rylah Institute	Galaxias	\$153,000
	Arthur Rylah Institute	Masters' Snake	\$100,000
	Arthur Rylah Institute	Heath Skink	\$105,000
	Arthur Rylah Institute	Threatened Orchid Package	\$259,420
	Arthur Rylah Institute	Greater Glider	\$100,000
	Arthur Rylah Institute	Fire, ferals and mammals	\$10,600
	Arthur Rylah Institute	Connecting communities	\$500,000
	Birdlife Australia	Hooded Plover	\$100,000
	Bush Heritage Australia	Habitat restoration and woodland bird resilience in the Box Ironbark West Regional Spatial Priority Landscape.	\$225,000
	Connecting Country (Mount Alexander Region) Inc	Woodland bird community habitat protection and enhancement	\$225,000
	Dja Dja Wurrung Clans Aboriginal Corporation	Dja Dja Wurrung in landscape	\$225,000
	Forest, Fire and Regions – Barwon South West	South-eastern red-tailed Black Cockatoo	\$12,000
	Forest, Fire and Regions – Barwon South West	Southern Right Whale – vessel impact mitigation	\$10,000
	Forest, Fire and Regions – Barwon South West	Southern Right Whale – calf survival assessment	\$30,500
	Forest, Fire and Regions – Barwon South West	Eastern Barred Bandicoot	\$50,000
	Forest, Fire and Regions – Barwon South West	Orange-bellied Parrot recovery	\$50,000
	Forest, Fire and Regions – Gippsland	Brush-tailed Rock Wallaby (Southern ESU)	\$60,000
	Forest, Fire and Regions – Gippsland	Threatened Victorian plants – Gippsland region	\$41,000
	Forest, Fire and Regions – Gippsland	Brush-tailed Rock Wallaby	\$40,000
	Forest, Fire and Regions – Gippsland	Giant Burrowing Frog	\$40,000

* See pages 287-304 of the DELWP 2017 Annual Report

Forest, Fire and Regions – Gippsland	<i>Isopogon prostratus</i> (Prostrate Cone Bush)	\$10,000
Forest, Fire and Regions – Gippsland	New Holland Mouse	\$40,000
Forest, Fire and Regions – Gippsland	Large Brown Tree Frog	\$75,000
Forest, Fire and Regions – Gippsland	Brush-tailed Rock Wallaby	\$50,000
Forest, Fire and Regions – Grampians	Basalt Peppercress (<i>Lepidium hyssopifolium</i>) and Geranium sp. 1 (Large-flower Crane's-bill)	\$5,150
Forest, Fire and Regions – Hume	Mountain Pygmy-possum	\$50,000
Forest, Fire and Regions – Hume	Regent Honeyeater	\$50,000
Forest, Fire and Regions – Hume	Threatened Victorian plants – Hume region	\$10,000
Forest, Fire and Regions – Loddon Mallee	Plains Wanderer	\$50,000
Forest, Fire and Regions – Port Phillip	Helmeted Honeyeater	\$50,000
Forest, Fire and Regions – Port Phillip	Threatened Victorian plants – Port Phillip region	\$10,000
Forrest, Fire and Regions – Barwon South West	Improving the quality and connectedness of grassland communities on the Victorian Volcanic Plain – Cressy	\$225,000
Forrest, Fire and Regions – Barwon South West	Improving the quality and connectedness of grassland communities on the Victorian Volcanic Plain – Woorndoo	\$225,000
Glenelg Hopkins Catchment Management Authority	Glenelg Estuary and Discovery Bay weed control	\$180,000
Goulburn Broken Catchment Management Authority	Managing threats in the Longwood Plains priority landscape	\$230,000
Greening Australia	Enhancing significant ecological communities and threatened flora and fauna of the Western District Lakes	\$225,000
Mallee Catchment Management Authority	Northern Mallee Woodlands	\$224,553
Mallee Catchment Management Authority	Murray to Mallee Connections	\$224,972
Mallee Catchment Management Authority	Mallee Dunefields to the Big Desert	\$224,711
Nature Glenelg Trust	Threatened species habitat restoration in the Wilkin Woodlands and Wetlands	\$225,000
Nature Glenelg Trust	Habitat restoration for threatened species of wetlands in the Glenelg Plain	\$225,000
Nillumbik Shire Council	Conservation Futures – protecting and conserving species in the Northern Yarra Ranges	\$177,713

North East Catchment Management Authority	Warby – Ovens	\$225,000
North East Catchment Management Authority	Chiltern – Mt Pilot	\$187,500
Parks Victoria	Fox control to protect New Holland Mouse and other threatened vertebrates on the Gippsland Plains	\$150,000
Parks Victoria	Mountains to Murray: The Upper Murray / North – North East Mountain outliers	\$225,000
Parks Victoria	Northern Plains landscape restoration project	\$225,000
Parks Victoria	Wilson's Prom Ark	\$225,000
Parks Victoria	Landscape control of weeds of national significance for biodiversity	\$150,000
Port Phillip and Westernport Catchment Management Authority	Protecting and connecting species and communities in Melbourne's west	\$225,000
Port Phillip and Westernport Catchment Management Authority	Protecting and connecting species and communities on the Mornington Peninsula	\$199,000
Project Platypus	Greater Grampians threatened flora	\$190,025
Wimmera Catchment Management Authority	Western Victorian woodlands protection and enhancement	\$250,000
Yarra Ranges Council	Protecting cool temperate rainforest and associated threatened species of the Upper Woori Yallock Creek Catchment	\$140,000
Zoos Victoria	Baw Baw Frog	\$100,000
Zoos Victoria	Leadbeater's Possum	\$100,000

Funding Program	Recipient	Project	Funding Support
Boosting Productivity Energy Assessment Grants This program is managed by Sustainability Victoria	Burton's Supa IGA	Energy Assessment Grant – Burton's Supa IGA	\$3,600
	CDC Geelong Pty Ltd	Energy Assessment – CDC Geelong	\$2,000
	CERES Inc	Energy Assessment Grant – CERES	\$3,000
	Flexible Drive Pty Ltd	Energy Assessment Grant – Flexible Drive	\$1,740
	Green Acres Golf Club	Energy Assessment Grant – Green Acres Golf Club	\$3,012
	Hindustan Imports	Energy Assessment Grant – Hindustan Imports	\$660
	Merriwa Industries Limited	Energy Assessment – Merriwa Industries Ltd	\$1,620

Case study: Victorian Energy Upgrades (Saving Energy, Growing Jobs)



Victorian Energy Upgrades program provides discounts to businesses and households on energy-efficient products and appliances, leading to upgraded facilities with lower energy costs, as well as reducing the burden and reliance on the energy system and reducing greenhouse gas emissions.

The program makes it cheaper for businesses and households to buy energy saving products, saving the typical household \$150 a year on energy bills, while small to medium-sized businesses may save up to \$670 annually. For larger businesses, the savings can run into the hundreds of thousands of dollars.

Healesville Sanctuary

Healesville Sanctuary, located in the Yarra Valley, is a wildlife haven which offers visitors the chance to see native Australian animals up close in their natural environment. The Sanctuary is also home to a wildlife hospital, treating more than 2,000 sick and injured animals each year.

Through the Victorian Energy Upgrades, the Sanctuary upgraded to energy efficient LED lighting in its animal hospital and retail area with minimal disruption, improving lighting and visibility in these areas. It is estimated that by using Victorian Energy Upgrades, the Sanctuary has been able to save \$1500 on energy costs each year.

"This is fantastic for the vets here. Better lighting allows us to give the best possible care to our animals."

Vet, Healesville Sanctuary

Violet Town Bush Nursing Centre

The Violet Town Bush Nursing Centre used Victorian Energy Upgrades to undertake energy-efficiency upgrades and replace old and inefficient lighting with new LED lights in 64 bedrooms, communal spaces, kitchens and offices. By going through Victorian Energy Upgrades, the Centre saved 90 per cent on up-front investment costs and greatly reduced their energy use, leading to savings of more than \$5,000 on their annual energy bills.

"We saved 90% on the installation costs and are now saving more than \$5,000 a year. And the payback on our investment was less than 3 months - unbelievable."

CEO, Violet Town Bush Nursing Centre

Funding Program	Recipient	Project	Funding Support
Building Victoria's Organics Recovery Grants This program is managed by Sustainability Victoria	City of Ballarat	Kerbside Organics Procurement in City of Ballarat	\$92,000
	City of Greater Bendigo	Kerbside Organics Procurement in City of Greater Bendigo	\$60,000
	City of Greater Geelong	Building Victoria's Organics Recovery – Geelong	\$100,000

Funding Program	Recipient	Project	Funding Support
Business Champion Network Grants This program is managed by Sustainability Victoria	Committee for Portland	Portland Manufacturing, Assembly and Design Engineering Network	\$3,185

Funding Program	Recipient	Project	Funding Support
Business Productivity Program – Resource Assessment Grants This program is managed by Sustainability Victoria	Alberton Timber and Treatment Plant Pty Ltd	Resource Assessment – materials and energy	\$3,676
	Alternative Glass Supplies Pty Ltd	Resource Assessment – Materials	\$7,500
	Connell's Bakery Pty Ltd	Resource Assessment – Materials	\$11,712
	Global Rotomoulding Pty Ltd	Resource Assessment – Materials	\$9,700
	Kyabram Cold Storage Pty Ltd	Resource Assessment – Materials	\$190
	Larnec Doors and Systems	Resource Assessment – Materials	\$10,000
	Merino and Jumbuck Company (Australia) Pty Ltd	Resource Assessment – Materials	\$4,849
	Snooza Pet Products (Aust) Pty Ltd	Resource Assessment – Materials	\$7,330
	Southern Cross Recycling Group Pty Ltd	Resource Assessment – Materials	\$4,690

Case study: ResourceSmart Schools



Attribution: © Sustainability Victoria 2018

The ResourceSmart Schools program aims to embed sustainability into Victorian schools by improving infrastructure and operations, teaching practices, student learning and community engagement to reduce their resource consumption and improve biodiversity.

The program supported more than 550 schools to exceed their targets by reducing their electricity consumption by 7,302,371 KWh and reducing their water consumption by 238,106 Kilolitres which saved collectively more than \$4 million through resource efficiency.

Students at the 2016 ResourceSmart School of the Year, Banyule Primary School, have been the drivers of a variety of projects in energy efficiency and water conservation at the school – creating new nesting boxes, an irrigation system and a greenhouse – and have become sustainability champions outside the school, improving local ecosystems and engaging the broader community to care for the planet.

Funding Program	Recipient	Project	Funding Support
Climate Change Research Grants This program is managed by DELWP	University of Melbourne (EU Centre on Shared Complex Challenges)	Climate Change Research Grants Project – EU Climate KIC Summer schools (2015-16 budget) – two-year initiative until 2018	\$95,000
	University of Melbourne	Two scholarships for Victorian early career academics under the Australian Research Council Centre of Excellence in Climate System Science (ARC CoE) (2015-16 budget) two-year initiative until 2018	\$90,000

Funding Program	Recipient	Project	Funding Support
Collaborative Councils – Sustainability Fund Partnership Grants This program is managed by DELWP and Local Government Victoria	Hepburn Shire Council	Waste to energy micro-power network	\$75,000
	Latrobe City Council	Gippsland resource recovery collaborative business case	\$75,000
	Manningham City Council	Smart lighting infrastructure	\$36,300
	Melbourne City Council	CO2 Performance Ladder Feasibility Study	\$32,500
	Mitchell Shire Council	Collaborative waste and recovery Infrastructure for electronic waste	\$59,867
	Nillumbik Shire Council	Regional low emissions fleet assessment	\$33,200
	Northern Grampians Shire Council	Joint waste facility	\$75,000
	Shepparton Rural City Council	Electric fleet feasibility study	\$75,000
	Wodonga City Council	Business case for shared services enabling energy efficient council buildings	\$70,000
	Wodonga City Council	Environmentally Sustainable Design (ESD) subdivision policy – proof of concept for regional Victoria	\$65,000

Funding Program	Recipient	Project	Funding Support
Peri Urban Weed Management Grants This program is managed by DELWP	Brimbank City Council	Peri-urban Weed Management Partnership – Maribyrnong Valley Connection project	\$30,000
	Cardinia Shire Council	Peri-urban Weed Management Partnership – Cardinia Creek Riparian Rehabilitation project	\$85,457
	City of Casey	Peri-urban Weed Management Partnership – Grasmere Creek Catchment project	\$30,000
	City of Greater Dandenong	Peri-urban Weed Management Partnership – Lower Dandenong Creek project	\$87,400
	Mornington Peninsula Shire Council	Peri-urban Weed Management Partnership – Mornington Peninsula weed control project	\$40,000
	Nillumbik Shire Council	Peri-urban Weed Management Partnership – River to Ranges project	\$30,000
	Parks Victoria	Peri-urban Weed Management Partnership – all projects	\$351,514
	Yarra Ranges Council	Peri-urban Weed Management Partnership – Dandenong Ranges weed removal project	\$30,000

Funding Program	Recipient	Project	Funding Support
Research and Development – Recovered Glass & Flexible Plastics Grants This program is managed by Sustainability Victoria	Swinburne University Hawthorn	Swinburne plastics and glass in footpaths R&D grant project	\$100,000
	University of Melbourne	Melbourne University lightweight concrete R&D grant project	\$25,000

Funding Program	Recipient	Project	Funding Support
Rural & Regional Landfill Support Grants This program is managed by Sustainability Victoria	Golden Plains Shire Council	Golden Plains Shire Council – Rokewood and Teesdale Landfills	\$140,000
	Loddon Shire Council	Loddon Shire Council – Inglewood Landfill	\$140,000
	Mildura Rural City Council	Mildura Rural City Council – Murrayville Landfill	\$138,500
	Northern Grampians Shire Council	Northern Grampians Shire Council – Hard Hills Landfill	\$100,000

Case study: Illegal Dumping Strikeforce Program



The Illegal Dumping Strikeforce Program assists the Environment Protection Authority (EPA) to tackle illegal industrial waste dumping.

Three priority projects were implemented in 2015-16 and 2016-17, including:

- Stockpiling of Tyres;
- Mid-Tier Construction and Demolition Generators; and
- Interstate Movement of Prescribed Industrial Waste.

Stockpiling of Tyres

It is estimated that nearly 50,000 tonnes of waste tyres were unaccounted for in Victoria in 2012-13, which are believed to be stockpiled or illegally dumped. Tyres stored together in large volumes can create a serious fire hazard and are extremely difficult to extinguish once ignited.

The Stockpiling of Tyres project implemented licence requirements for waste tyre facilities that store over a certain number of tyres, distributed a brochure on the risks of tyre stockpiles on rural properties and began investigating whether satellite technologies can be used to detect illegal stockpile sites. The EPA has seen a notable reduction in stockpile sites, and at the end of 2016-17 the EPA had just one licenced site.

Mid-Tier Construction and Demolition Generators

The Mid-Tier Construction and Demolition Generators project was introduced to assist the EPA to encourage firms to dispose of their construction and demolition waste legally in permitted facilities.

Research and consultation suggests that many mid-tier construction and demolition firms are not meeting their obligations for appropriate disposal of industrial waste, costing the state a significant amount in clean-up costs each year.

Outcomes of the project include:

- An increase in inspections of selected demolition sites;
- the development of an education video, Know Where Your Waste Goes, which informs the sector on industrial waste responsibilities.
- introducing the requirement for Victorian Building Authority to notify the EPA of applications for demolition permits, increasing visibility of demolition activities across the state and allowing the EPA to send builders and site owners information on their waste management obligations before site works begin.

Around 25 per cent of Victorian construction activity is related to government contracts. To ensure government contractors dispose of waste correctly, and increase the oversight and auditing of waste management requirements, EPA worked with government to develop a draft Procurement Toolkit. This Toolkit requires government infrastructure project tenders to incorporate waste disposal costs and evidence of correct disposal by contractors.

The project also saw the development and implementation of the Build Aware Program, aimed to educate building practitioners on their regulatory responsibilities regarding waste disposal through media channels and inspections of building sites. The program has been so successful that additional campaigns are being planned in 2017/18.

Interstate Movement of Prescribed Industrial Waste

Since 2013, there has been an increase in the number of allegations of prescribed industrial waste (PIW) being transported interstate from Victoria without EPA's approval. The movement of hazardous waste from Victoria can increase the environmental risks associated with transporting PIW to inappropriate locations.

In response, the Interstate Movement of Prescribed Industrial Waste project was established to reduce the amount of non-liquid PIW being transported interstate for disposal without approval.

Outcomes of the project include:

- 171 per cent increase in applications to transport PIW out of Victoria,
- development of draft principles on the cross-border movement of waste
- development of an educational video game to increase awareness of EPA approval requirements
- a workshop with other jurisdictions on managing waste nationally; and
- an increase in roadside inspections and inspections of PIW producer sites.

Funding Program	Recipient	Project	Funding Support
Support for Landcare Grants This program is managed by DELWP	Avon Landcare Group Inc	Landcare facilitator	\$7,630
	Barongarook Landcare Group		\$1,250
	Basalt to Bay Landcare Network Inc		\$1,244
	Bass Coast Landcare Network Inc		\$1,250
	Bellarine Landcare Group Inc		\$1,250
	Blampied Kooroocheang Landcare Group		\$1,250
	Broken Catchment Landcare Network Inc (Gecko CLaN)		\$1,250
	Buloke and Northern Grampians Landcare Network		\$1,140
	Connecting Country (Mt Alexander Region) Inc		\$1,250
	Corangamite Catchment Management Authority	Regional Landcare coordination 2016-17	\$149,200
	Department of Justice and Regulation	Landmate environment program	\$250,000
	East Gippsland Catchment Management Authority	Regional Landcare coordination 2016-17	\$149,200
	East Gippsland Landcare Network Inc	Landcare facilitator	\$1,250
	Far East Victoria Landcare Inc		\$1,250
	Geelong Landcare Network Inc		\$1,250
	Glenaladale Landcare Group		\$1,250
	Glenelg Hopkins Catchment Management Authority	Regional Landcare coordination 2016-17	\$149,200
	Goulburn Broken Catchment Management Authority	Regional Landcare coordination 2016-17	\$149,200
	Goulburn Murray Landcare Network Inc	Landcare facilitator	\$1,250
	H11-H12 Community Action Group (Beyond Bolac Catchment Action Group)		\$1,250
	Hamilton to Coleraine Railway Line Landcare Group Inc		\$1,250
	Heytesbury District Landcare Network Inc		\$1,250
	Hindmarsh Landcare Network Inc		\$1,250
	Hughes Creek Catchment Collaborative		\$1,250
	Kaniva District Landcare		\$1,144
	Kara Conservation Management Network		\$1,202
	Kiewa Catchment Landcare Group		\$1,250

Kowree Farm Tree Group		\$1,250
Laharum Landcare Group		\$1,250
Latrobe Catchment Landcare Network		\$1,250
Lismore Land Protection Group		\$1,250
Loddon Plains Landcare Network		\$1,250
Maffra and Districts Landcare Network		\$1,250
Making A Difference (MAD) for the Merri Inc		\$392
Mallee Catchment Management Authority	Regional Landcare coordination 2016-17	\$149,200
Manangatang Landcare Inc	Landcare facilitator	\$1,250
Mandurang Strathfieldsaye Landcare Network		\$448
Merton Landcare Inc		\$1,250
Mid Loddon Sub-Catchment Management Group		\$341
Mid Ovens Landcare Consortium		\$1,250
Millewa Carwarp Landcare Group		\$1,250
Mitta Valley Landcare Group		\$1,250
Moorabool Landcare Network		\$1,250
Mornington Peninsula Landcare Network		\$1,195
Murrayville Landcare Group		\$1,250
NatureWest		\$1,125
North Central CMA	Regional Landcare coordination 2016-17	\$149,200
North East CMA	Regional Landcare coordination 2016-17	\$149,200
Nullawil Landcare Group	Landcare facilitator	\$1,250
Ovens Landcare Network		\$1,250
Pannyabyr Landcare Group Inc		\$1,239
Parks Victoria	Victorian environment friends network award	\$5,000
Port Phillip and Westernport Catchment Management Authority	Regional Landcare Coordination 2016-17	\$149,200
Rainbow and District Landcare Group	Landcare facilitator	\$1,250

Snowy River Interstate Landcare Committee Inc	Landcare facilitator	\$1,124
South Gippsland Landcare Network		\$1,250
South West Goulburn Landcare Network		\$1,250
Southern Otway Landcare Network		\$1,119
Southern Ranges Environment Alliance		\$1,250
Strathewen Landcare Group Inc		\$1,250
Surf Coast and Inland Plains Network		\$1,250
Sustainability Victoria	ResourceSmart Schools sponsorship	\$22,000
Tarragal Landcare Group	Landcare facilitator	\$1,250
Tom's Creek Landcare Group		\$1,250
Up2Us Landcare Alliance		\$1,250
Upper Campaspe Combined Landcare Groups		\$1,250
Upper Deep Creek Landcare Network		\$1,247
Upper Goulburn Landcare Network		\$1,250
Upper Hopkins Land Management Group Inc		\$993
Upper Loddon and Avoca Landcare Network		\$1,250

Case study: Metropolitan Organics Strategy



The Organics Fund aimed to assist councils in Metropolitan Melbourne to implement best practice waste collection and management systems in line with the Metropolitan Waste and Resource Recovery Strategic Plan.

Outcomes include:

- that the Compost made to Victorian standards is a fit-for-purpose alternative to commonly used material like sandy loam soil in biofiltration systems and that these findings could create significant demand for recycled organics in the Victorian market

- The award-winning Melton Botanical Gardens used over 300 tonnes of compost as a soil improver to create a new garden and compost trials found the most effective compost to soil ratio for Southern African plants was 1:10. The garden showcases how the application of compost benefits soil health and structure; and
- The installation of an on-site organics dehydrator at the Royal Melbourne Hospital now diverts and processes 160 tonnes of organic waste from hospitals and businesses in the Parkville precinct.

Funding Program	Recipient	Project	Funding Support
<p>Tallangatta Eco-Education Hub Grants</p> <p>This program is managed by Sustainability Victoria</p>	Towong Shire Council	Tallangatta Eco-Education and Integrated Services Hub	\$50,000

Funding Program	Recipient	Project	Funding Support
Threatened Species Grants This program is managed by DELWP	Arthur Rylah Institute	Galaxias	\$153,000
	Arthur Rylah Institute	Heath Skink	\$105,000
	Arthur Rylah Institute	Master's Snake	\$100,000
	Arthur Rylah Institute	Greater Glider	\$100,000
	Arthur Rylah Institute	Round snout Galaxias recovery actions	\$27,000
	Arthur Rylah Institute	McDowall's Galaxias and East Gippsland Galaxias recovery actions	\$27,000
	Arthur Rylah Institute	Fire, ferals and mammals	\$10,600
	Australasian Native Orchid Society (Victoria Group) Inc	Plains Grassland	\$8,190
	Balcomb Moorooduc Landcare Group	Balcomb Creek habitat	\$2,600
	Bass Coast Landcare Network	Holden the ground – completion of predator proofing at Holden Proving Ground	\$24,597
	Bass Valley Landcare Group	Creating, protecting and enhancing Swamp Skink and Powerful Owl habitat in the Bass Valley	\$25,000
	Beechworth Urban Landcare and Sustainability	Beechworth Cemetery Rabbit Exclusion Zone (for the protection of threatened species)	\$24,015
	Beyond Bolac Catchment Action Group	Wongan Creek threatened species protection project	\$10,000
	Binginwarri Landcare Subgroup	Protecting and enhancing Strzelecki warm temperate rainforest	\$25,000
	BirdLife Australia	Providing tools and capacity building for community protection of Victoria's most threatened beach bird	\$18,590
	BirdLife Australia	Hooded Plover	\$50,000
	BirdLife Australia	Rehabilitation of various nesting sites of Fairy Tern in Westernport and Port Phillip Bays.	\$24,520
	Broken Boosey Conservation Management Network	A turquoise landscape – working towards improving habitat for the threatened Turquoise Parrot	\$16,224
	Bush Heritage Australia	Habitat restoration and woodland bird resilience in the Box Ironbark West Regional Spatial Priority Landscape	\$250,000
	Cairnlea Conservation Reserves Committee of Management	Restoring endangered reptile habitat	\$13,300
	Campaspe River and Land Management Group	Australian Anchor Plant – protection, propagation, and revegetation in the Campaspe catchment	\$16,883
	Cardinia Catchment Landcare Group Inc	Cardinia Creek threatened species protection program	\$18,500

Christmas Hills Landcare Group	Artificial hollows for Pygmy Possums and Powerful Owls in Christmas Hills	\$8,090
Concongella Landcare group	More local habitat for our threatened species	\$22,490
Connecting Country (Mount Alexander Region) Inc	Woodland bird community habitat protection and enhancement	\$225,000
Connecting Country (Mount Alexander Region) Inc	Boosting Bulokes and Diamond Firetails in the Muckleford valley and surrounds of central Victoria	\$25,000
Conservation Volunteers Australia	Monitoring species post wildlife recovery within the Grampians landscape	\$6,900
Darebin Creek Management Committee Inc	Protecting <i>Dianella</i> species of the Darebin parkland	\$5,100
Deep Creek Landcare Group	<i>Dianella amoena</i> conservation project	\$2,409
Department of Environment, Land, Water and Planning (DELWP)	Improving the quality and connectedness of grassland communities on the Victorian Volcanic Plain – Cressy	\$225,000
DELWP	Improving the quality and connectedness of grassland communities on the Victorian Volcanic Plain – Woorndoo	\$225,000
DELWP	Large Brown Tree Frog	\$75,000
DELWP	Brush-tailed Rock Wallaby (Southern ESU)	\$60,000
DELWP	Orange-bellied Parrot	\$50,000
DELWP	Bush-tailed Rock Wallaby	\$50,000
DELWP	Eastern Barred Bandicoot	\$50,000
DELWP	Helmeted Honeyeater	\$50,000
DELWP	Mountain Pygmy-possum	\$50,000
DELWP	Regent Pygmy-possum	\$50,000
DELWP	Plains Wanderer	\$50,000
DELWP	Threatened Victorian plants (Gippsland region)	\$41,000
DELWP	Brush Tailed Rock Wallaby	\$40,000
DELWP	Giant Burrowing Frog	\$40,000
DELWP	New Holland Mouse	\$40,000
DELWP	Southern Right Whale (calf survival assessment)	\$30,500
DELWP	South-eastern red tailed Black Cockatoo	\$12,000
DELWP	Threatened Victorian plants (Port Phillip region)	\$10,000
DELWP	Threatened Victorian plants (Hume region)	\$10,000
DELWP	Southern Right Whale (Vessel impact mitigation)	\$10,000
DELWP	<i>Isopogon Prostratus</i> (Prostrate Cone Bush)	\$10,000
DELWP	Basalt Peppercress	\$ 4,400
DELWP	Geranium sp.1 (Large-flower Crane's Bill)	\$750

DELWP and Arthur Rylah Institute	Orchid package	\$259,420
Dja Dja Wurrung Clans Aboriginal Corporation	Dja Dja Wurrung in landscape	\$225,000
Dja Dja Wurrung Clans Aboriginal Corporation	Dja Dja Wurrung Caring for Country – Pimelea conservation	\$10,485
Donald and District Landcare Group	Protecting Buloke Woodlands 2016	\$9,350
East Gippsland Landcare Network Inc	Landcare supporting threatened species in East Gippsland	\$24,950
Emu Plains Racecourse and Recreation Reserve Committee of Management	Eradication of Wild Watsonia in Remnant Damp Heathland (Ecological Vegetation Class 710)	\$5,115
Euroa Arboretum	Ecological education, training and practical conservation for Grassy Woodlands in the Longwood Plains	\$17,500
Euroa Arboretum Inc	Improving species diversity in Buloke Grey Box Grassy Woodland sites of the Longwood Plains	\$21,800
Euroa Environment Group	Seven Creeks, Euroa: A nationally significant spot for threatened species	\$25,000
Friends of Eastern Otways Inc	GPS training to enhance threatened species surveys	\$5,000
Friends of Merri Creek Inc	Bringing our native grassland, Bababi Marning, to life	\$5,250
Friends of Werribee Gorge and Long Forest Mallee	Rocky Chenopod conservation project	\$7,976
Friends of Westgate Park Inc	Protecting threatened plant species and habitat at Westgate Park using community volunteers	\$7,900
Gecko CLaN Landcare Network	Bush Stone-curlews in the Koonda Hills	\$8,500
Gippsland Plains Conservation Management Network	Moormung Bridal Creeper Mapping Project	\$11,500
Glen Katherine Primary School	Planting and propagating the Pale-flower Crane's-bill and Velvet Apple-berry	\$16,500
Glenelg Hopkins Catchment Management Authority	Glenelg Estuary and Discovery Bay weed control	\$180,000
Goulburn Broken Catchment Management Authority	Managing threats in the Longwood Plains priority landscape	\$230,000
Goulburn Murray Landcare Network	Protecting three icon threatened species of the Goulburn Murray Landcare area	\$11,500
Greening Australia	Enhancing significant ecological communities and threatened flora and fauna of the Western District Lakes	\$225,000
Greening Australia	Building Community Support for the Salt Lake Tussock Grass and Spiny Peppergrass	\$25,000
Greta Valley Landcare Group	Connecting the ranges to the rivers for threatened species in the Greta Valley	\$25,000

Highlands Landcare Group	Supporting our forest heavyweights – Powerful Owls and Greater Gliders	\$6,800
Hindmarsh Landcare Network	Monitoring threatened species in community revegetation sites	\$10,200
Hindmarsh Landcare Network Inc	Strategic community planting for threatened species in the northern Wimmera	\$11,200
Honeysuckle Recreational Environment Project, Violet Town Action Group	Increasing habitat for Squirrel Gliders and Grey-crowned Babblers	\$17,800
Jallukar Landcare Group	Jallukar Bandicoot habitat	\$15,819
Kara Conservation Management Network	Action for threatened species in Victoria's western goldfields	\$23,300
Kongwak Hills Landcare Group	Gums, Owls and Growls in Kongwak	\$24,960
Kooloonong-Natya Landcare Group	Kooloonong-Natya Malleefowl	\$16,750
Korumburra Landcare Group	Community led revegetation and weed control to protect and enhance the Strzelecki Gum	\$24,990
Leigh Catchment Group	Find Ballarat's threatened frogs	\$22,900
Lismore Land Protection Group	Protecting and restoring Corangamite Water Skink habitat and Victorian Volcanic Plains Eucalyptus Woodlands along Mt Emu Creek	\$25,000
Loddon Plains Landcare Network	Restoring a key habitat corridor for the Bush Stone Curlew on the Calivil Creek, Yarrowalla	\$24,980
Longwood Plains Conservation Management Network	Increasing habitat, nest boxes and fox baiting for threatened species	\$25,000
Mallee Catchment Management Authority	Murray to Mallee Connections	\$224,972
Mallee Catchment Management Authority	Mallee Dunefields to the Big Desert	\$224,711
Mallee Catchment Management Authority	Northern Mallee Woodlands	\$224,553
Marlborough Primary School	Marlborough habitat restoration, revegetation, monitoring and education for the Powerful Owl	\$21,745
Moolort Landcare Inc	Moolort Plains remnant Pimelea spinescens and Victorian Volcanic Plains grassland awareness raising and on-ground conservation	\$4,700
Moorabool Catchment Landcare Group	The Tale of the Tuan – discovering Brush-tailed Phascogales in the Moorabool	\$15,227
Moorabool Landcare Network	Camera trap surveys for threatened species in the Moorabool Landcare Network	\$21,000
Mount Korong Eco Watch	Rewilding Korong Ridge – pest species eradication: feral fox, cat and rabbit control	\$8,000
Mt Rothwell Landcare Volunteers	Captive Bandicoot Cleanse: Ensuring the survival of the Bandicoot genetics on the Australian mainland	\$25,000

Mt Worth and District Landcare Group Inc	Mt Worth threatened species biolink	\$15,420
Natural Resources Conservation League of Victoria	Monitoring Threatened Species in Southern Brown Bandicoot Management Area	\$21,500
Nature Glenelg Trust	Threatened species habitat restoration in the Wilkin Woodlands and Wetlands	\$225,000
Nature Glenelg Trust	Habitat restoration for threatened species of wetlands in the Glenelg	\$225,000
Neerim and District Landcare Group	Protecting and restoring stream habitat for threatened species of the Red Hill Creek	\$19,700
Nillumbik Landcare Network	Habitat improvement and monitoring of Nillumbik's iconic threatened species	\$23,230
Nillumbik Landcare Network	Nillumbik threatened Orchid program – community engagement and site preparation for reintroductions	\$21,190
Nillumbik Shire Council	Conservation Futures – protecting and conserving species in the Northern Yarra Ranges	\$177,713
North East CMA	Warby – Ovens	\$225,000
North East CMA	Chiltern – Mt Pilot	\$187,500
Northern Bendigo Landcare Group	Huntly Streamside Reserve biolink	\$18,000
Northern Grampians Landcare Group	Northern Grampians save our threatened species	\$15,690
Nyah West Landcare Group	Towan Plains protecting diversity	\$22,500
Ovens Landcare Network	Indian Myna awareness – highlighting the increasing risk to hollow dependant threatened species	\$4,600
Panyyabyr Landcare Group	Finding nature	\$11,030
Parklands Albury Wodonga Limited	Building a network of threatened species monitors	\$18,650
Parks Victoria	Mountains to Murray: The Upper Murray/ North – North East Mountain outliers	\$225,000
Parks Victoria	Northern Plains landscape restoration project	\$225,000
Parks Victoria	Wilsons Prom Ark	\$225,000
Parks Victoria	Fox control to protect New Holland Mouse and other threatened vertebrates on the Gippsland Plains	\$150,000
Parks Victoria	Landscape control of weeds of national significance for biodiversity	\$150,000
Peranbin Primary College	Making our school a haven for threatened species: habitat regeneration at Peranbin Primary College	\$25,000
Phillip Island Landcare Group Inc	Eastern Barred Bandicoot buffer zone	\$17,500

Port Phillip and Westernport Catchment Management Authority	Protecting and connecting species and communities in Melbourne's west	\$225,000
Port Phillip and Westernport Catchment Management Authority	Protecting and connecting species and communities on the Mornington Peninsula	\$199,000
Project Platypus	Greater Grampians threatened flora	\$190,025
Project Platypus	Black Range Bandicoot link	\$25,000
Project Platypus Association Inc	A whole lot of rubbish – cleaning up the 'Ironbarks' (Deep Lead Nature Conservation Reserve)	\$24,800
Project Platypus Association Inc	Native Pasture for Wildlife	\$15,761
Project Platypus Association Inc	Upper Wimmera habitat enhancement and wildlife monitoring	\$9,499
Regent Honeyeater Project Inc	Habitat Restoration for Threatened Species – people power in action	\$25,000
Rutherglen Landcare Group	Bolstering Brolga Breeding – fox threat and hazard abatement	\$20,800
Shepparton Mooroopna Landcare Network	Squirrel Glider nest box monitoring and community awareness program	\$5,066
Southern Otway Landcare Network	Restoration of Long Nosed Potoroo habitat in fire affected landscapes of the Great Ocean Road	\$24,367
Southern Otway Landcare Network	Keeping an eye on Cape Otways Potoroos	\$12,353
St Arnaud Field Naturalist Club Inc	Protection and recruitment of the Wax Garden Reserve's threatened Buloke and Goldfields Grevillea colonies	\$17,793
Strathallan Family Landcare	Gliders along the Campaspe	\$7,499
Strathbogie Ranges Conservation Management Network	Strathbogie Forest citizen science	\$16,490
Swamps Rivers and Ranges	Jessie's Creek – community Riparian Restoration of complex Indigenous habitats	\$24,790
Tag for Life	Sharks – Maligned, mysterious and misunderstood	\$23,500
The Basalt to Bay Landcare Network	Tracks for Dunnarts	\$16,875
The Basalt to Bay Landcare Network	Growing volunteer experiences and habitat at St Helens, Victoria	\$10,940
Up2Us Landcare Alliance	Locating the Lost Brush Tailed Phascogale	\$19,500
Up2Us Landcare Alliance	Nectar for Fords Creek	\$15,750
Upper Barwon Landcare Network	Preserving the genetic diversity of the Yarra Gum in the Upper Barwon	\$14,077
Upper Goulburn Landcare Network	Ribbons of Remnant Roadsides	\$21,135

Upper Goulburn Landcare Network	Discovering two gems of threatened species in grassland country	\$20,950
Victoria University	Seeds from school	\$9,890
Victorian National Parks Association	Caught on Camera	\$15,800
Victorian National Parks Association	Growling Grass Frog community monitoring project	\$15,600
Western Port Catchment Landcare Network	Protecting the present, planning for the future – Powerful Owl habitat	\$24,875
Wimmera Catchment Management Authorities	Western Victorian woodlands protection and enhancement	\$250,000
Wodonga Urban Landcare Network Inc	Creating a Wodonga Nestbox Network	\$9,480
Wonyip Landcare Subgroup	Wonyipedia – education, identification and protection of threatened species in the Strzelecki Ranges	\$25,000
Woodend Landcare	Filling in the Black Gum gaps along Five Mile Creek	\$6,650
Woodside Landcare Group	Enhancing Reedy Creek for critically endangered Martin's Toadlet and the endangered Tree Goanna	\$25,000
Yarra Ranges Council	Protecting cool temperate rainforest and associated threatened species of the Upper Woori Yallock Creek Catchment	\$140,000
Zoos Victoria	Baw Frog	\$50,000
Zoos Victoria	Leadbeater's Possum	\$50,000
3 Creeks Landcare Group	Increasing and enhancing the area of habitat for the Swamp Antechinus through targeted revegetation	\$24,904

Case study: Cleaner Yarra and Port Phillip Bay



Litter and nurdle clean up

University students and the community have teamed up and got their hands sandy with the Port Phillip Eco Centre at a beach litter and microplastics/nurdle clean up and survey in St Kilda.

Participants learnt about the work of the Port Phillip Eco Centre, the natural and indigenous history of the area, and St Kilda's evolution over time before hitting the sand to clean up.

Together the group collected three, full Clean Up Australia bags of rubbish, and learnt how to sweep the sand for microplastics and nurdles.

Litter auditing and clean up are key components to successful litter prevention programming. Port Phillip EcoCentre is a local leader in this space, facilitating and enabling other groups working in this field to run successful programs

Funding Program	Recipient	Project	Funding Support
Victorian Litter Innovation Fund	Greater Shepparton City Council	Shepparton solar bin project	\$18,000
	Mitchell Shire Council	Litter: It's a waste of our time	\$2,500
	Mt Buller and Mt Stirling Resort Alpine Management Board	Reducing litter at remote locations on Mt Stirling pilot study	\$9,000
	Phillip Island Nature Park	Litter innovation fund – turn the tide	\$18,000
	San Remo Foreshore Committee of Management Inc	Pelican reflecting on plastic usage and litter generation	\$9,000
	South Gippsland Shire Council	Cigarette butt litter education and enforcement project	\$12,600
	Southern Cross Recycling Group Pty Ltd	SMART public place clothing recycling banks	\$5,000
	Strathbogie Shire Council	Love our lake: Put your waste in the right place	\$9,000

Funding Program	Recipient	Project	Funding Support
Victorian Organics Resource Recovery Strategy	Veolia Environmental Services	Veolia – Kilter three-year compost demonstration trial for Broadacre crops in the Mallee Region, Victoria	\$10,500