



# Forest Fire Management Victoria

## Smoke Management and Planned Burning

Environment,  
Land, Water  
and Planning

**FOREST FIRE  
MANAGEMENT VICTORIA**

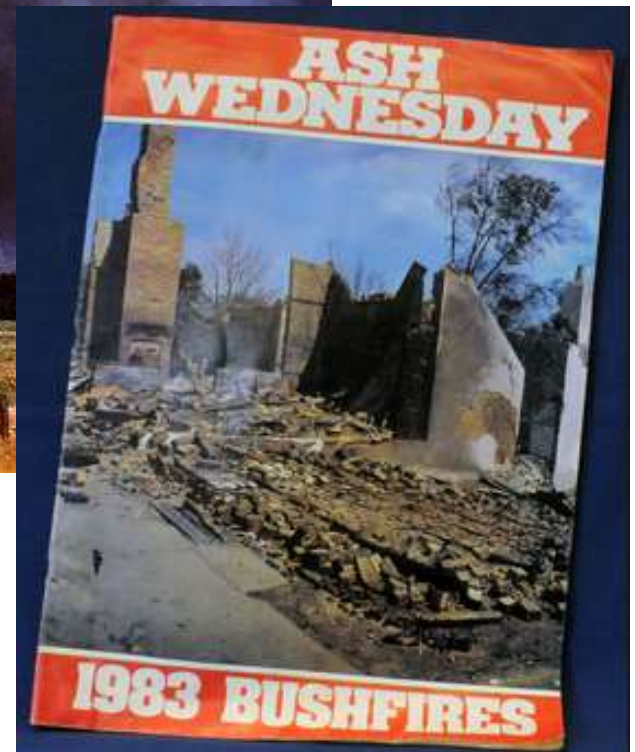
# Why Planned Burning?

Victoria is one of the most fire-prone areas in the world.



Black Saturday 2009

Planned burning can reduce the intensity and spread of bushfires.





# Recommendations to Manage Fuels

1944  
VICTORIA

## REPORT

OF THE

### ROYAL COMMISSION

TO INQUIRE INTO

The Place of Origin and the Causes of the Fires which commenced at Yalloom on the 14th day of February, 1944;

The Adequacy of the Measures which had been taken to Prevent Damage;

AND

The Measures to be taken to Protect the Undertaking and Township at Yalloom;

Together with Minutes of Evidence.

PRESENTED TO BOTH HOUSES OF PARLIAMENT BY HIS EXCELLENCY'S COMMAND.



## 2009 Victorian Bushfires Royal Commission

ENVIRONMENT AND NATURAL RESOURCES COMMITTEE

## INQUIRY INTO THE IMPACT OF PUBLIC LAND MANAGEMENT PRACTICES ON BUSHFIRES IN VICTORIA

JUNE 2008



VICTORIA

REPORT

OF THE

BUSHFIRE REVIEW COMMITTEE

ON BUSHFIRE DISASTER PREPAREDNESS  
AND RESPONSE IN VICTORIA, AUSTRALIA,  
FOLLOWING THE ASH WEDNESDAY FIRES

16 FEBRUARY 1983

Victoria has now adopted a risk based approach for fuel management.

# State Smoke Management Framework

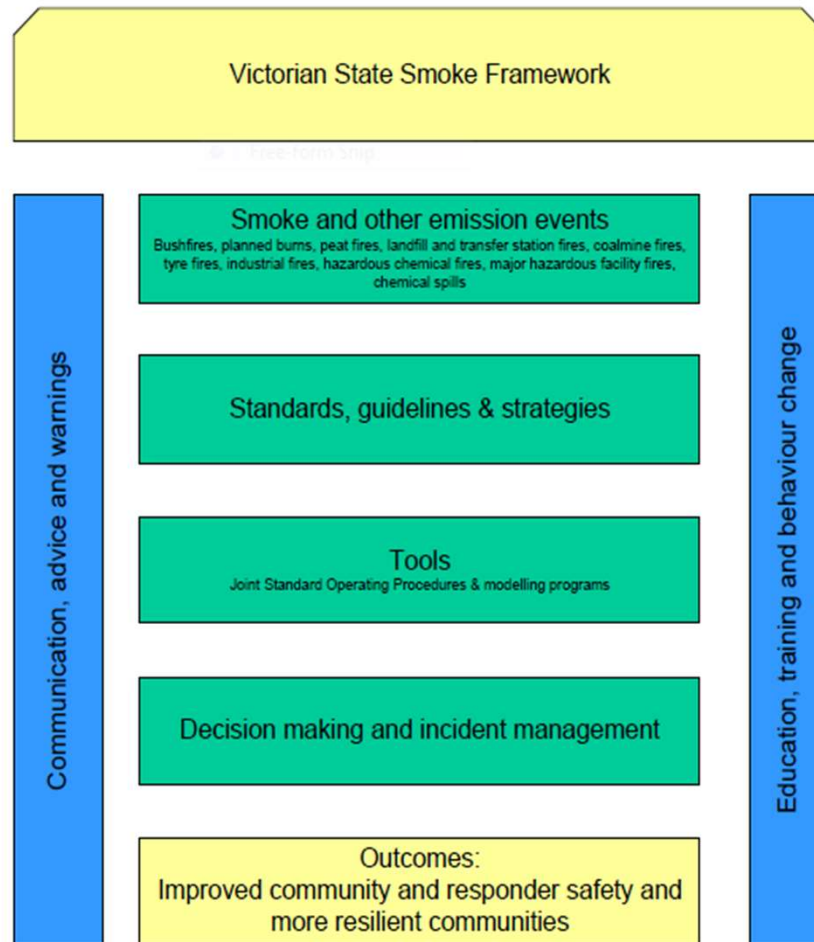
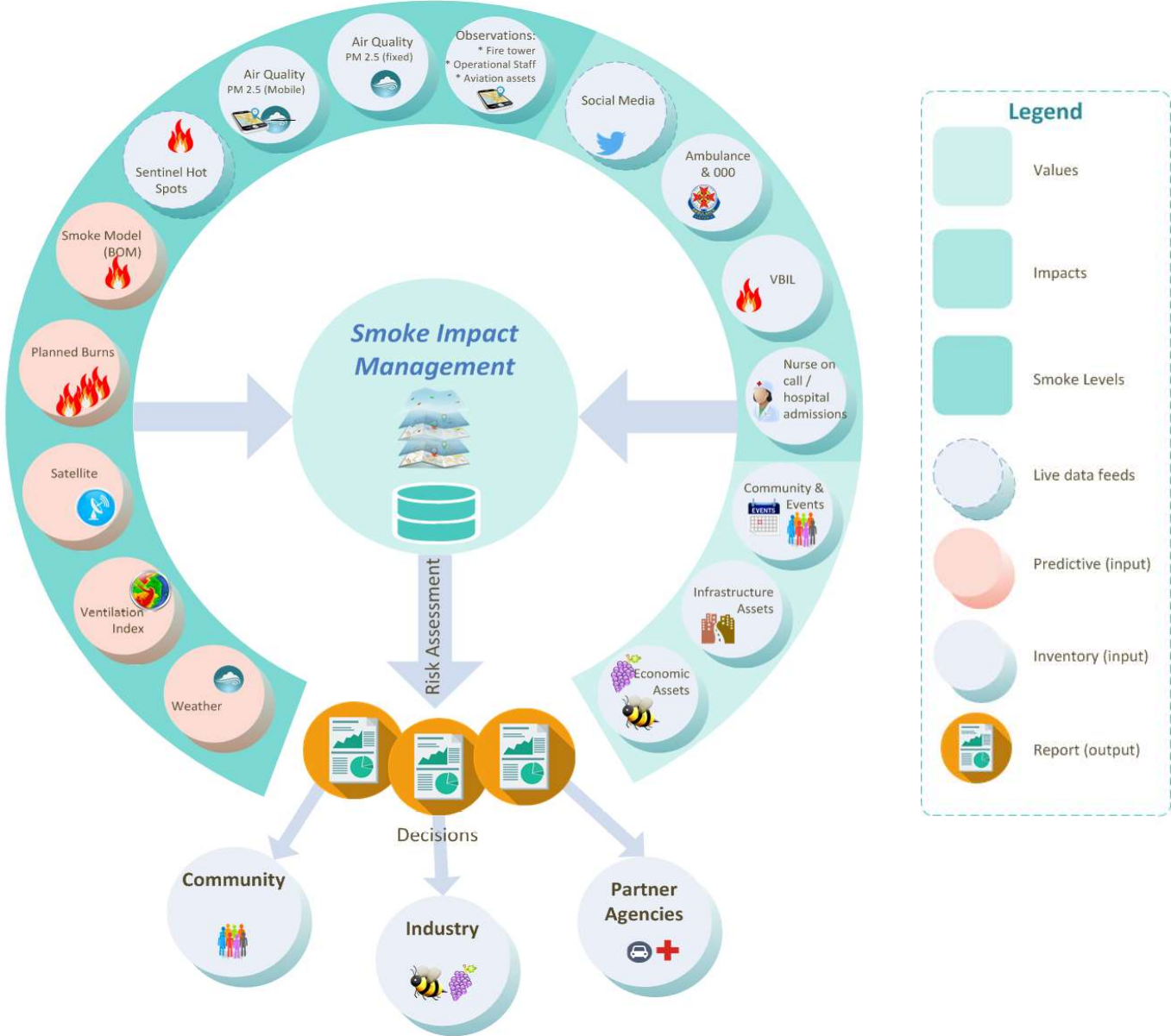


Figure 1: State Smoke Framework diagram

# Planned Burning Decision Cycle



# Planned Burning and Smoke Management Challenges



Photo Peter Galvin, Planned Burn, Lorne 4 April 2018



# Thank you

