

Biodiversity Interactive Map (BIM) – How to attach a map

The Biodiversity Interactive Map (BIM) is accessible via the URL:
<http://mapshare2.dse.vic.gov.au/MapShare2EXT/imf.jsp?site=bim>

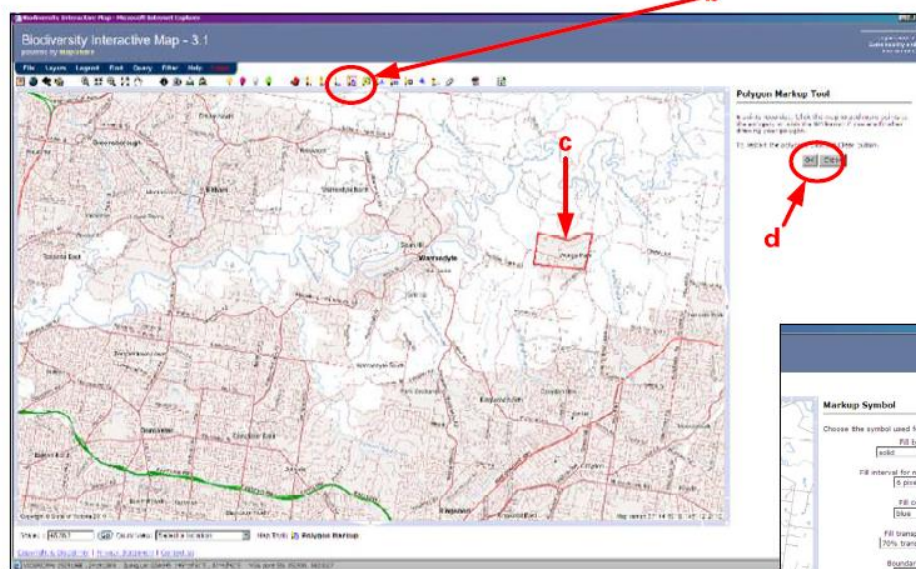
Before you start, please note that when using BIM, you can only draw polygons, boxes or lines.

If you make a mistake and need to erase the error, please note all the line work will be erased as there is currently no way to erase only selected sections of the link work.

- Find the location you are interested in on the map.
- To draw a polygon area, select the polygon markup tool: click on the red toolbox icon (a) which will open up to display a choice of markup tools.
- To draw a polygon, select the polygon tool (b) using the left mouse button, click to create the vertices of your polygon.

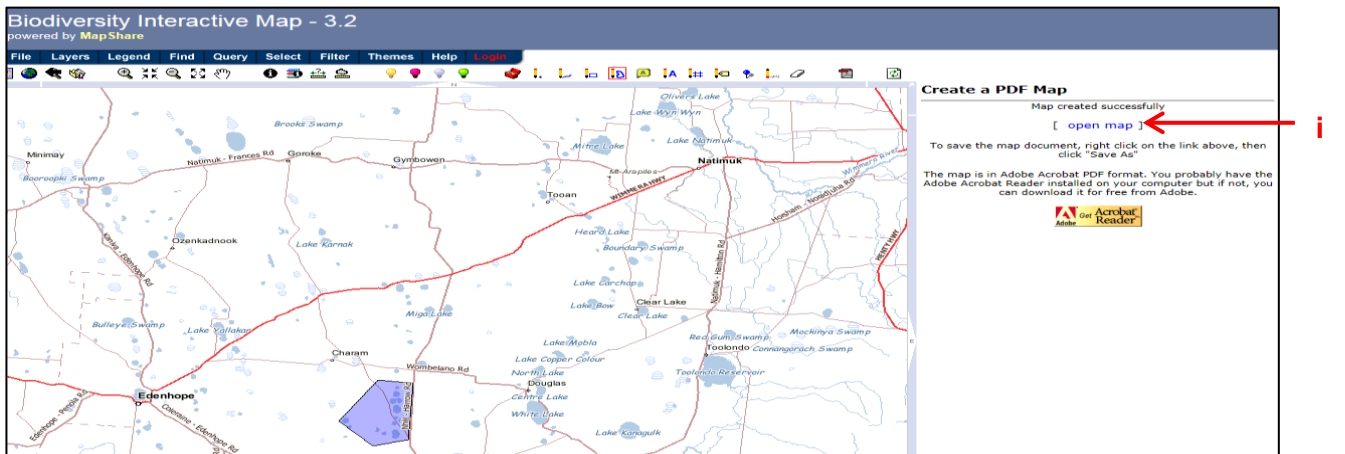
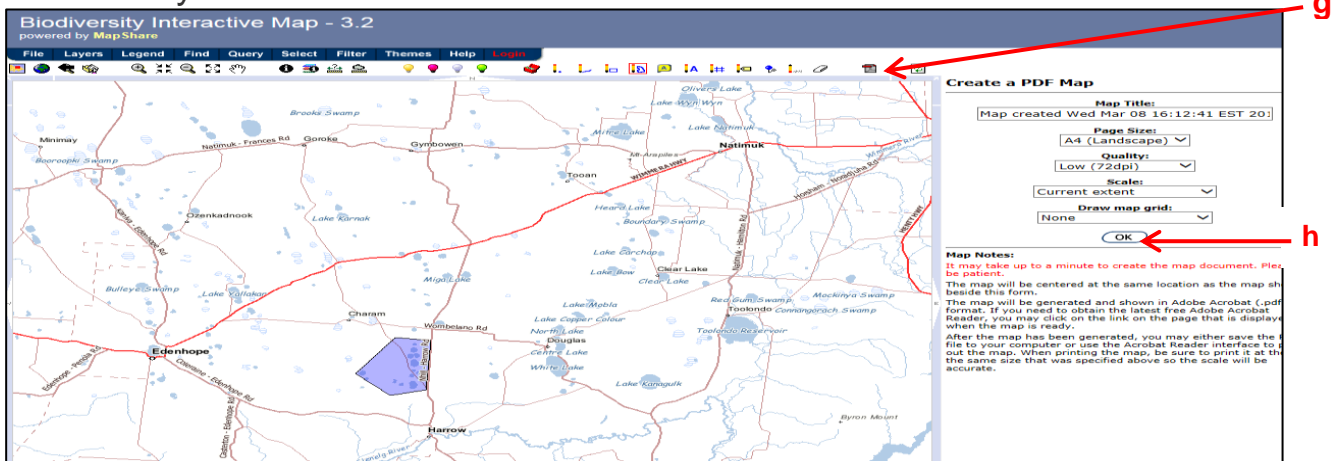


- When the polygon is complete (c), click the OK button (d) choose how to display the polygon and/or click the OK button (e) which will display the polygon you draw (f).



Saving your map

- To save this polygon as a pdf, click on the PDF icon (g) to bring up the Create a PDF Map screen and click 'OK' (h).
- To save the map document, right click on the 'open map' link (i), then click "Save target as..."
- When you save your map, please put your Smartygrants [Application Number](#) in the title of your PDF.



For additional advice or support on how to create or attach maps of sites to an application, please contact David Adams from DELWP on 03 9637 9800 or via email at david.adams@delwp.vic.gov.au

© The State of Victoria Department of Environment, Land, Water and Planning 2017



This work is licensed under a Creative Commons Attribution 4.0 International licence. You are free to re-use the work under that licence, on the condition that you credit the State of Victoria as author. The licence does not apply to any images, photographs or branding, including the Victorian Coat of Arms, the Victorian Government logo and the Department of Environment, Land, Water and Planning (DELWP) logo. To view a copy of this licence, visit <http://creativecommons.org/licenses/by/4.0/>

ISBN 978-1-76047-521-5 - Online

Disclaimer

This publication may be of assistance to you but the State of Victoria and its employees do not guarantee that the publication is without flaw of any kind or is wholly appropriate for your particular purposes and therefore disclaims all liability for any error, loss or other consequence which may arise from you relying on any information in this publication.

Accessibility

If you would like to receive this publication in an alternative format, please telephone the DELWP Customer Service Centre on 136186, email customer.service@delwp.vic.gov.au, or via the National Relay Service on 133 677 www.relayservice.com.au. This document is also available on the internet at www.delwp.vic.gov.au.