

The Regent Honeyeater

If you see one, we'd love to hear from you

Regent Honeyeaters are classified as Critically Endangered both nationally and in Victoria.

Sighting records are invaluable. They help us piece together survival, habitat use, seasonal movement and breeding patterns.

Please report any sightings to:

Dean Ingwersen

The Regent Honeyeater Recovery Coordinator for BirdLife Australia

- Free Call **1800 621 056** or
- dean.ingwersen@birdlife.org.au

Details sought:

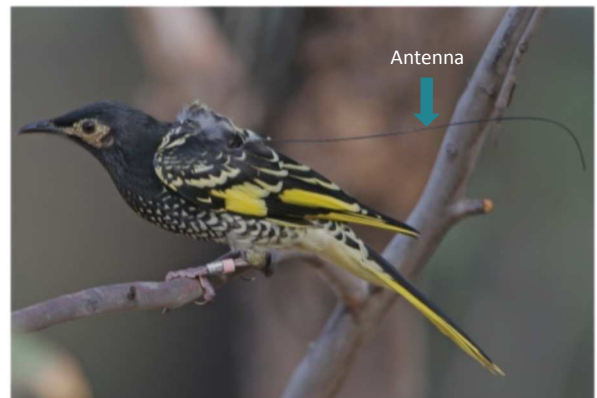
- Your name and contact details including phone number, address and email
- Date & time of observation
- Location (as specific as possible)
- Number of Regent Honeyeaters seen
- Colour band combinations (left and right legs) for any banded birds observed
- Any significant activity e.g. breeding



Right: Orange Metal (2017 Chiltern Captive Release)
Left: Red Blue
Photo: Dean Ingwersen

Captive Release and Monitoring Program

101 captive bred Regents will be released in April 2017. Half of these birds will be fitted with a radio-tracking transmitter and antenna allowing us to gain a better understanding of their survival and movements.



Left: Pink Metal (= 2010 Chiltern Captive Release) Photo: Dean Ingwersen

National Colour Banding Program

Banded Regents have two bands on each leg. Each bird's 'four band combination' enables individuals to be uniquely identified, back to the point of capture (wild birds) or release (captive bred birds). A master colour band always sits over a Metal band (that includes a unique stamped band number).

Captive bred birds released at Chiltern have the following master colour leg band sequence.

- **2017 release:** Orange over Metal Left or Right
- **2015 release:** Red over Metal Right leg
- **2013 release:** White over Metal Left leg
- **2010 release:** Pink over Metal Left leg

Wild Regents banded at Chiltern will always have a **Green master over Metal band**. It can be on the right or left leg.

The remaining leg will have two colour bands. Note: Band colour sequence is recorded from **top to bottom** i.e. **body to claw**.

Band Identification and Recording made easy

You'll need some good binoculars!

Identifying band colours isn't always easy!

The light is not always ideal and birds are almost always on the move, upside down or behind foliage or branches. It's not often you get a good view of both legs at the same time. This makes accurate recording of all four bands difficult. Fear not! Any information is worthwhile. Just be honest and record only what you can confirm. If you only make out a definite leg band silhouette or shape but can't identify any colour details, that's incredibly valuable in itself. If you can only confirm one colour on one leg that helps us narrow the options down too. If you can take a photo, that would great!

Good binoculars will improve band identification!

Band Colours

Code:	Colour
N:	Black
O:	Orange
P:	Green
U:	Mauve
Y:	Yellow
W:	White
B:	Blue
R:	Red
K:	Pink
M:	Metal



Left: White Metal (= 2013 Chiltern Captive Release)
Right: Red Mauve

Photo: Dean Ingwersen



Left: Pink Metal (= 2010 Chiltern Captive Release)
Right: Unknown (Unidentified individual)

Photo: Dean Ingwersen



Right: Red Metal (2015 Chiltern Captive Release)
Left: Blue Blue

Photo: Dean Ingwersen



Right: Green Metal (= Wild bird banded at Chiltern)
Left: Yellow White

Photo: Glen Johnson