



Spatial Temporal Activity Recorder (STAR)

How to use the drawing tools

The purpose of this section is to describe the drawing tools that may be used in creating and editing Program, Project and Activity (Plant Assessment, Animal Assessment, Plant Management, Animal Management and Engagement Activity) sites (features) in STAR. The steps for saving 'Point' 'Line' and 'Polygon' are the same for each so is explained in [Completing the feature](#).

Drawing tools	
<p>Drawing Tools are used to spatially record the area of a Program, Project, Zone and Activity as well as Flora Assessment and Fauna Assessment observations, and weed and pest management treatments by point, line and polygon (shapes).</p> <p>Point and line features can only be associated with Activity information i.e. Flora Assessment, Fauna Assessment, Weed Management, Pest Management or Engagement Activity.</p>	
<p>Drawing a polygon feature</p> <p>Two tools are available for drawing a polygon.</p> <p>The hexagon enables a user to draw freehand any shape and the rectangle enables a user to draw a rectangle.</p> <p>Note – zoom the map to the desired location and scale before drawing.</p>	

How to use the drawing tools

Drawing a freehand polygon feature

Click the hexagon to start the polygon.

On the map click the mouse at the start point of the polygon then click the mouse to mark the next point of the polygon – continue around the shape of the area. At each point the line should change direction and the shape of the polygon as it develops is displayed.

To finish the polygon double click the mouse one point before the start point – the start and last points will join to make the polygon.

Note: Polygon lines should not cross over each other. The map will not save properly if lines of the same polygon dissect. (See [Alert message](#))

To continue with saving the feature see [Completing the feature](#).

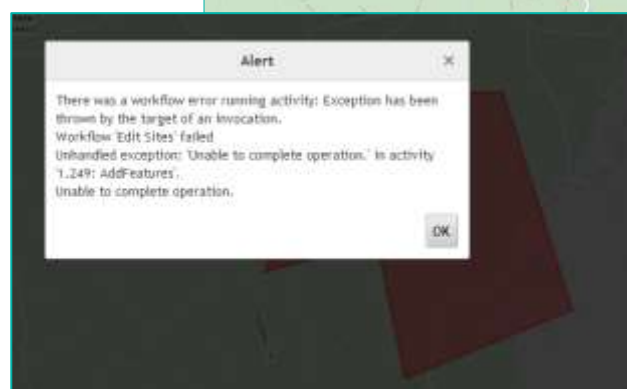
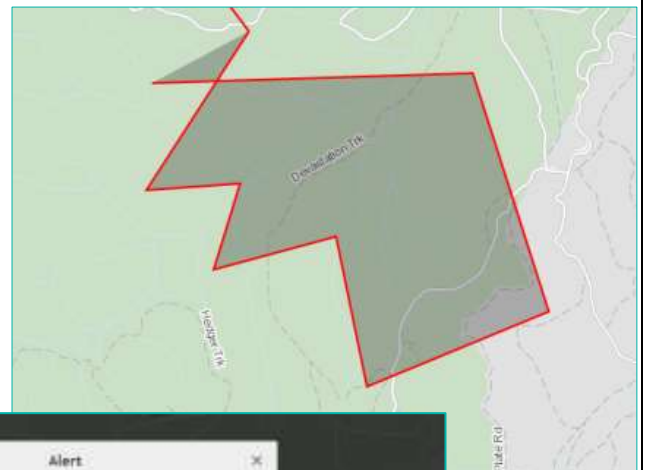


Alert message

If the polygon lines cross the feature will not be able to be saved and an Alert message will appear.

Clicking the OK button on the Alert message will return the display to the unsaved map.

The user should navigate back to the project or activity page that the drawing was being edited from using the 'breadcrumbs'. The feature will not have been saved.

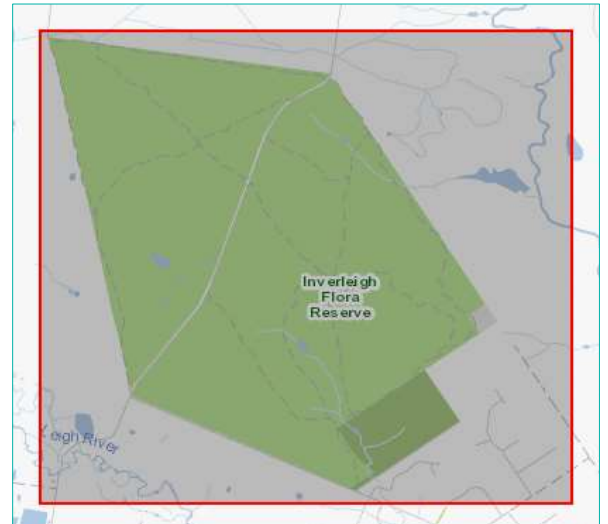


How to use the drawing tools

Drawing a rectangle polygon feature

Click the rectangle to start the polygon.

On the map click the mouse at the start point of the rectangle and holding the mouse button down drag the mouse over the intended area. Release the mouse button when the desired shape and size rectangle is displayed.



To continue with saving the feature see [Completing the feature](#).

Drawing a line feature

Click the line button to start the line on the map,

Click the start point of the line on the map, release the mouse button and click to the next point in the line if changing direction, continue for length of the feature and double click to finish.

To continue with saving the feature see [Completing the feature](#).



How to use the drawing tools

To add multiple lines for the same Activity:

1. Draw the first line, double click to finish.

Geometry captured will appear in the left menu bar below the point, line and polygon buttons.

2. Click Next

3. Click 'Save Site'

4. Click the line draw tool (button) and draw another line.

5. Continue steps 2, 3 and 4 for the required number of features




✓ Geometry captured.

Clear Next >> Cancel

<< Back Save Site Cancel

Select the draw tool below to create a site.
Select an area on the map.



Clear Next >> Finish



How to use the drawing tools

Drawing a point feature

The Point drawing tool can only be selected for recording a Flora Assessment or Fauna Assessment 'Observation', a Weed Management or Pest Management 'Treatment', or Engagement Activity.

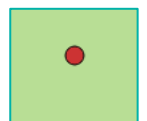
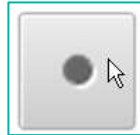
Click the point drawing tool button and click the mouse pointer on the location in the map that the feature is located. A black circle will appear at the location.

Geometry captured will appear in the left menu bar below the point, line and polygon buttons and the feature will change to a red dot on the map.

To continue with saving the feature see [Completing the feature](#).

When saved

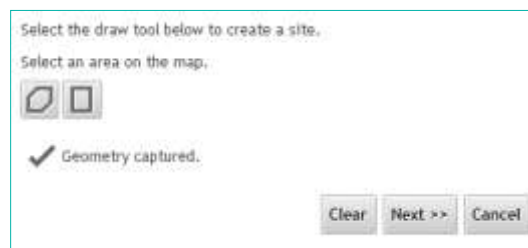
- Plant Assessment point displays as a plant,
- Animal Assessment point displays as a deer,
- Plant Treatment and Animal treatments displays as a pick and mallet (brown and green)
- Engagement Activity displays as 2 people



Completing the feature

When the feature is completed 'Geometry captured' appears in the menu below the drawing tool buttons.

Click the Next>> button



How to use the drawing tools

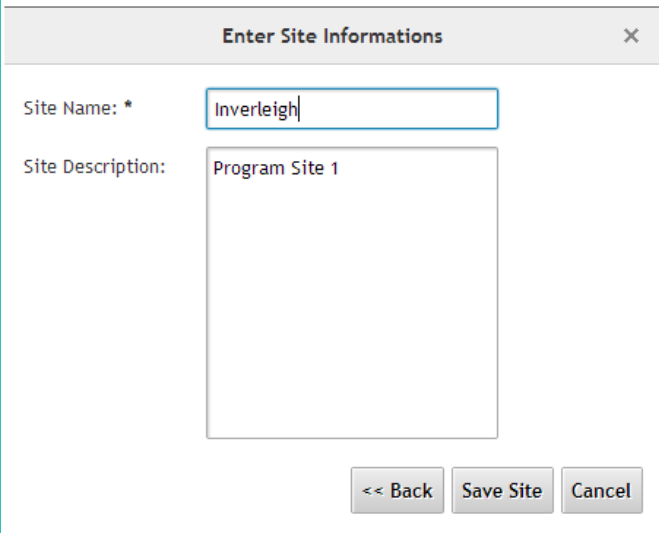
The Name of the Program, Project or Activity associated with the point, line or polygon appears in the Site Name* box.

'Program Site 1' appears in the Site Description box.

Clicking the 'Cancel' button will delete the feature and stop the 'Add' command. The map layers will appear in the left menu bar.

To draw the feature again the user must return to the Program, Project or Activity page that the feature relates to.

Clicking the 'Save Site' button will display the: polygon, line or point on the map in a different colour and pattern or icon – it is no longer in edit mode.



The dialog box titled "Enter Site Informations" has a close button (X) in the top right corner. It contains two input fields: "Site Name: *" with the text "Inverleigh" and "Site Description:" with the text "Program Site 1". At the bottom, there are three buttons: "<< Back", "Save Site", and "Cancel".

Clicking the 'Finish' button saves the map.

Return to the Program, Project or Activity page associated with the feature (by using the breadcrumbs at the top of the page) and click Save.



The interface shows the text "Select the draw tool below to create a site." and "Select an area on the map." Below this are two icons representing drawing tools: a polygon and a rectangle. At the bottom right, there are three buttons: "Clear", "Next >>", and "Finish".

The map will display with the added features for the Program, Project or Activity.

